

36-2706: Anti-LMO2 (B-Cell Marker) Monoclonal Antibody(Clone: LMO2/1971)

Clonality :	Monoclonal
Clone Name :	LMO2/1971
Application :	FACS,WB,IHC
Reactivity :	Human
Gene :	LMO2
Gene ID :	4005
Uniprot ID :	P25791
Alternative Name :	Cysteine-rich protein TTG-2; LIM domain only protein 2; LMO-2; RBTN L1; RBTN2; Rhombotin like 1; Rhombotin-2 (RHOM2); T-cell translocation protein 2; TTG2
Isotype :	Mouse IgG2b, kappa
Immunogen Information :	Recombinant human LMO2 protein fragment (around aa 23-140) (exact sequence is proprietary)

Description

The LMO2 protein has a central and crucial role in hematopoietic development and is highly conserved. It has a particular function in normal and lymphatic endothelial cells involving the regulation of angiogenesis and lymph-angiogenesis. Immunohistochemical studies have also demonstrated expression of LMO2 in both normal germinal center B-cells and germinal center-derived B-cell lymphomas, including follicular lymphoma and diffuse large B-cell lymphoma. The use of anti-LMO2 is valuable as a tool in the identification of lymphomas of B-cell origin. LMO2 is useful in differentiating follicular lymphoma (LMO2+) from nodal marginal zone lymphoma (LMO2-). It also is positive in Hodgkin s and Burkitt s lymphomas.

Product Info

Amount :	20 µg / 100 µg
Content :	200 µg/ml of Ab Purified from Bioreactor Concentrate by Protein A/G. Prepared in 10mM PBS with 0.05% BSA & 0.05% azide. Also available WITHOUT BSA & azide at 1.0mg/ml.
Storage condition :	Antibody with azide - store at 2 to 8°C. Antibody without azide - store at -20 to -80°C. Antibody is stable for 24 months. Non-hazardous.

Application Note

Flow Cytometry (1-2ug/million cells); Western Blot (1-2ug/ml); Immunohistology (Formalin-fixed) (1-2ug/ml for 30 min at RT),(Staining of formalin-fixed tissues requires boiling tissue sections in 10mM citrate buffer, pH 6.0, for 10-20 min followed by cooling at RT for 20 minutes),

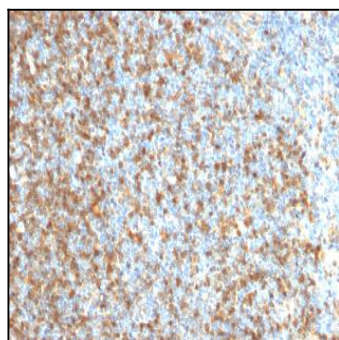


Fig. 1: Formalin-fixed, paraffin-embedded human Follicular Lymphoma stained with LMO2 Mouse Monoclonal Antibody (LMO2/1971).

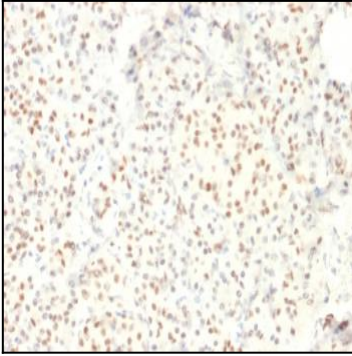


Fig. 2: Formalin-fixed, paraffin-embedded human Pancreas stained with LMO2 Mouse Monoclonal Antibody (LMO2/1971).

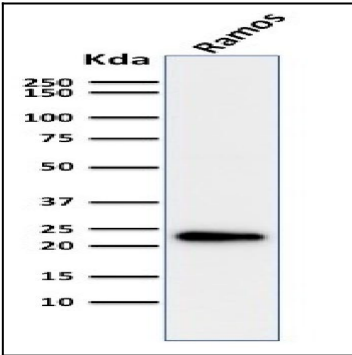


Fig. 3: Western Blot Analysis of Ramos cell lysate using LMO2 Mouse Monoclonal Antibody (LMO2/1971).

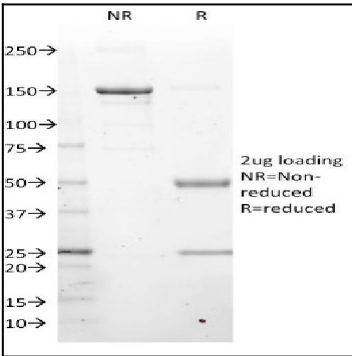


Fig. 4: Purified LMO2 Mouse Monoclonal Antibody (LMO2/1971). Confirmation of Purity and Integrity of Antibody.

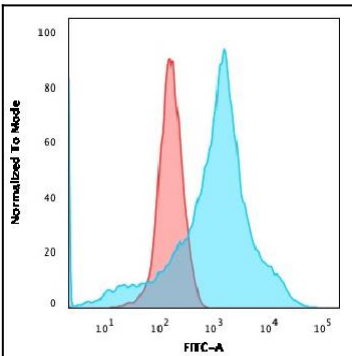


Fig. 5: Flow Cytometric Analysis of K562 cells using LMO2 Mouse Monoclonal Antibody (LMO2/1971) followed by goat anti-Mouse IgG-CF488 (Blue); Isotype Control (Red)