

## 36-2702: Anti-Luteinizing Hormone / Choriogonadotropin Receptor (LHCGR) Monoclonal Antibody(Clone: LHCGR/1415)

|                                |   |
|--------------------------------|---|
| <b>Clonality :</b>             | Monoclonal  |
| <b>Clone Name :</b>            | LHCGR/1415  |
| <b>Application :</b>           | FACS,IF   |
| <b>Reactivity :</b>            | Human   |
| <b>Gene :</b>                  | LHCGR   |
| <b>Gene ID :</b>               | 3973  |
| <b>Uniprot ID :</b>            | P22888  |
| <b>Alternative Name :</b>      | Gonadotropin receptor; GTHR-II; HHG; LCGR; LGR2; LH-R; LH/CG-R; LH/CGR; LHCGR; LHR; LHRHR; LSH-R; Luteinizing hormone receptor; Luteinizing hormone/choriogonadotropin receptor; Lutropin choriogonadotropic receptor; Lutropin-choriogonadotropic hormone receptor; ULG5 |
| <b>Isotype :</b>               | Mouse IgG1, kappa   |
| <b>Immunogen Information :</b> | Recombinant fragment (around aa 70-410) of human LHCGR protein (exact sequence is proprietary)  |

### Description

Recognizes a protein of 78-85kDa, which is identified as Luteinizing hormone / choriogonadotropin receptor. Luteinizing hormone plays a role in spermatogenesis and ovulation by stimulating the testes and ovaries to produce steroids. Choriogonadotropin production in the placenta maintains estrogen and progesterone levels during the first trimester of pregnancy. Ovaries and testes abundantly express luteinizing hormone / choriogonadotropin receptor (LHCGR) as a seven transmembrane, G protein-coupled receptor glycoprotein. LHCGR influences the protective effect of pregnancy and Gonadotropin against breast cancer. The expression of LHCGR on breast carcinoma correlates in part to the degree of tumor differentiation. LHCGR -positive breast tumors occur more frequently in tumors with greater cell differentiation in premenopausal women.

### Product Info

|                            |   |
|----------------------------|---|
| <b>Amount :</b>            | 20 µg / 100 µg  |
| <b>Content :</b>           | 200 µg/ml of Ab Purified from Bioreactor Concentrate by Protein A/G. Prepared in 10mM PBS with 0.05% BSA & 0.05% azide. Also available WITHOUT BSA & azide at 1.0mg/ml. |
| <b>Storage condition :</b> | Antibody with azide - store at 2 to 8°C. Antibody without azide - store at -20 to -80°C. Antibody is stable for 24 months. Non-hazardous.                               |

### Application Note

Flow Cytometry (1-2ug/million cells); Immunofluorescence (1-2ug/ml);

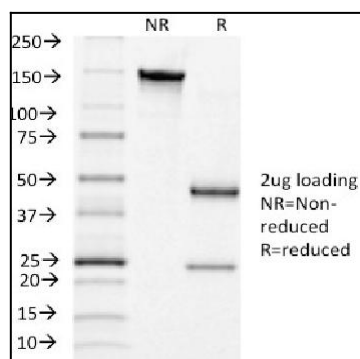


Fig. 1: SDS-PAGE Analysis Purified LHCGR Mouse Monoclonal Antibody (LHCGR/1415). Confirmation of Integrity and Purity of Antibody.