

36-2700: Anti-Galectin-1 / Human Placental Lactogen (hPL) Monoclonal Antibody(Clone: GAL1/1831)

Clonality :	Monoclonal
Clone Name :	GAL1/1831
Application :	WB,ELISA,IF,WB,IHC
Reactivity :	Human
Gene :	LGALS1
Gene ID :	3956
Uniprot ID :	P09382
Alternative Name :	14kDa laminin-binding protein; Beta-galactoside-binding lectin L-14-I; Gal-1; GAL1; Galaptin; Galectin-1; HLBP14; HPL; Lactose-binding lectin 1; Lect14; Lectin galactoside-binding soluble 1; LGALS1; MAPK activating protein MP12; S-Lac lectin 1
Isotype :	Mouse IgG1, lambda
Immunogen Information :	Recombinant fragment (around aa12-108) of human Galectin-1 protein (exact sequence is proprietary)

Description

Galectin-1 is a member of the beta-galactoside-binding family and is a dimeric protein of 14kD participating in a variety of normal and pathological processes, including cancer progression. Galectin-1 can affect the proliferation of normal and malignant cells. Inhibition of cell growth is observed in a lactose-dependent manner as lower concentrations of the lectin stimulate cell proliferation. Galectin-1 may also be implicated in the induction of apoptosis of activated T cells through the binding of exogenous galectin-1 to CD45 molecules present on the surface of lymphocytes. Galectin-1, reported to be present either at the surface of cancer cells or accumulated around these cells could act as an immunological shield to protect against a T cell immune response and provide an advantage for survival.

Product Info

Amount :	20 µg / 100 µg
Content :	200 µg/ml of Ab Purified from Bioreactor Concentrate by Protein A/G. Prepared in 10mM PBS with 0.05% BSA & 0.05% azide. Also available WITHOUT BSA & azide at 1.0mg/ml.
Storage condition :	Antibody with azide - store at 2 to 8°C. Antibody without azide - store at -20 to -80°C. Antibody is stable for 24 months. Non-hazardous.

Application Note

Western Blot (1-2ug/ml); ELISA (Use Ab at 2-4ug/ml for coating) (Order Ab without BSA); Immunofluorescence (1-2ug/ml); Western Blot (1-2ug/ml); Immunohistochemistry (Formalin-fixed) (1-2ug/ml for 30 min at RT)(Staining of formalin-fixed tissues requires heating tissue sections in 10mM Tris with 1mM EDTA, pH 9.0, for 45 min at 95°C followed by cooling at RT for 20 minutes);

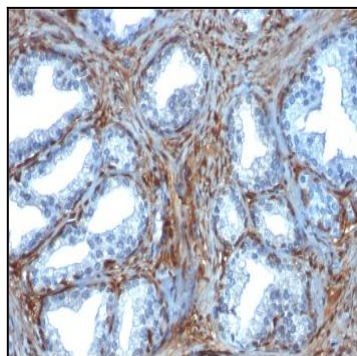


Fig. 1: Formalin-fixed, paraffin-embedded human Prostate Carcinoma stained with Galectin-1 Monospecific Mouse Monoclonal Antibody (GAL1/1831).

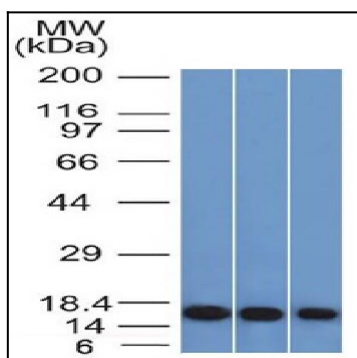


Fig. 2: Western Blot of HeLa, K562 and 293 cell lysates Galectin-1 Monospecific Mouse Monoclonal Antibody (GAL1/1831).

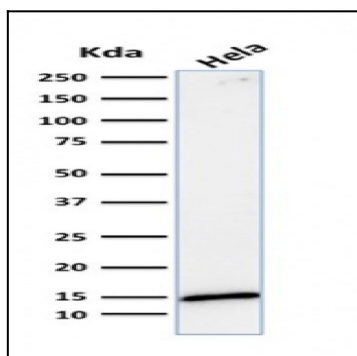


Fig. 3: Western Blot Analysis of human HeLa cell lysate using Galectin-1 Monospecific Mouse Monoclonal Antibody (GAL1/1831).

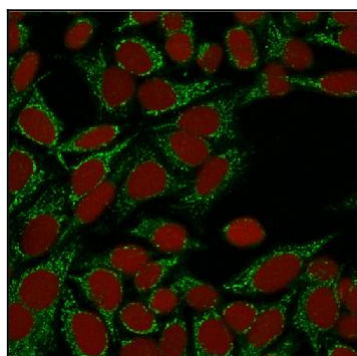


Fig. 4: Confocal immunofluorescence image of HeLa cells using Galectin-1 Monospecific Mouse Monoclonal Antibody (GAL1/1831). Green (CF488) and Reddot is used to label the nuclei Red.

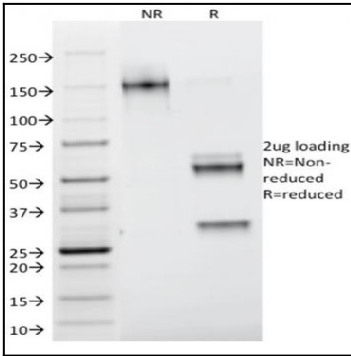


Fig. 5: SDS-PAGE Analysis Purified Galectin-1 Monospecific Mouse Monoclonal Antibody (GAL1/1831). Confirmation of Integrity and Purity of Antibody.

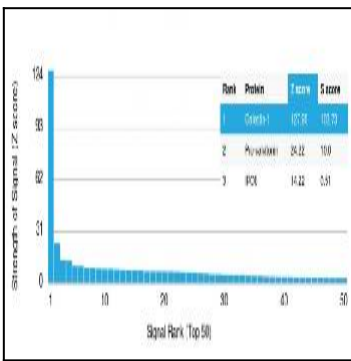


Fig. 6: Analysis of Protein Array containing more than 19,000 full-length human proteins using Galectin-1 Monospecific Mouse Monoclonal Antibody (GAL1/1831). Z- and S- Score: The Z-score represents the strength of a signal that a monoclonal antibody (MAb) (in combination with a fluorescently-tagged anti-IgG secondary antibody) produces when binding to a particular protein on the HuProt™ array. Z-scores are described in units of standard deviations (SD's) above the mean value of all signals generated on that array. If targets on HuProt™ are arranged in descending order of the Z-score, the S-score is the difference (also in units of SD's) between the Z-score. S-score therefore represents the relative target specificity of a MAb to its intended target. A MAb is considered to be specific to its intended target, if the MAb has an S-score of at least 2.5. For example, if a MAb binds to protein X with a Z-score of 43 and to protein Y with a Z-score of 14, then the S-score for the binding of that MAb to protein X is equal to 29.