

36-2637: Anti-ARF1 (Golgi Apparatus Marker) Monoclonal Antibody(Clone: ARF1/2117)

Clonality :	Monoclonal
Clone Name :	ARF1/2117
Application :	IHC
Reactivity :	Human, Mouse, Rat
Gene :	ARF1
Gene ID :	375
Uniprot ID :	P84077
Alternative Name :	ADP-ribosylation factor 1; ARF1
Isotype :	Mouse IgG2a, kappa
Immunogen Information :	Recombinant full-length human ARF1 protein

Description

The ADP-ribosylation factor (ARF) family comprises a group of structurally and functionally conserved proteins, which are members of the Ras superfamily of regulatory GTP-binding proteins. The ARF family is divided functionally into the ARF and the ARF-like proteins. ARF's share more than 60% sequence identity, appear to be ubiquitous in eukaryotes, and are highly conserved evolutionarily. ARF is involved in intracellular protein traffic to and within the Golgi complex. ARF has a number of disparate activities including maintenance of organelle integrity, assembly of coat proteins, as a co-factor for cholera toxin and as an activator of phospholipase D.

Product Info

Amount :	20 µg / 100 µg
Content :	200 µg/ml of Ab Purified from Bioreactor Concentrate by Protein A/G. Prepared in 10mM PBS with 0.05% BSA & 0.05% azide. Also available WITHOUT BSA & azide at 1.0mg/ml.
Storage condition :	Antibody with azide - store at 2 to 8°C. Antibody without azide - store at -20 to -80°C. Antibody is stable for 24 months. Non-hazardous.

Application Note

Immunohistochemistry (Formalin-fixed) (1-2ug/ml for 30 min at RT)(Staining of formalin-fixed tissues requires heating tissue sections in 10mM Tris with 1mM EDTA, pH 9.0, for 45 min at 95°C followed by cooling at RT for 20 minutes);

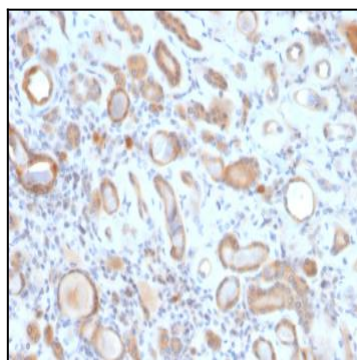


Fig. 1: Formalin-fixed, paraffin-embedded human Kidney stained with ARF1 Mouse Monoclonal Antibody (ARF1/2117).

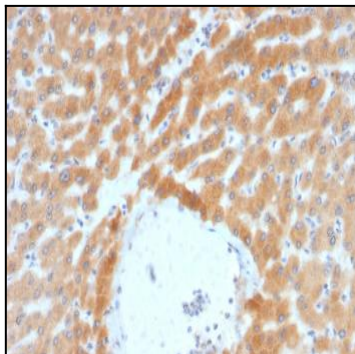


Fig. 2: Formalin-fixed, paraffin-embedded human Liver stained with ARF1 Mouse Monoclonal Antibody (ARF1/2117).

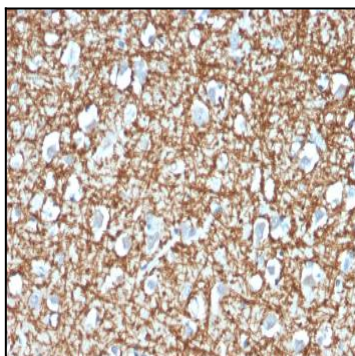


Fig. 3: Formalin-fixed, paraffin-embedded human Brain stained with ARF1 Mouse Monoclonal Antibody (ARF1/2117).

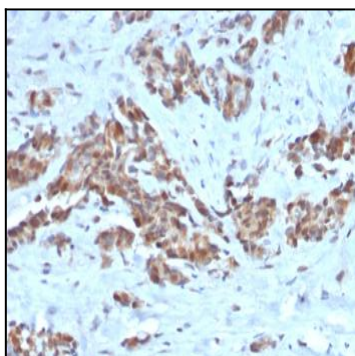


Fig. 4: Formalin-fixed, paraffin-embedded human Breast stained with ARF1 Mouse Monoclonal Antibody (ARF1/2117).

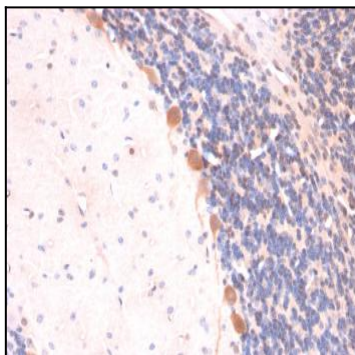


Fig. 5: Formalin-fixed, paraffin-embedded Rat Brain stained with ARF1 Mouse Monoclonal Antibody (ARF1/2117).

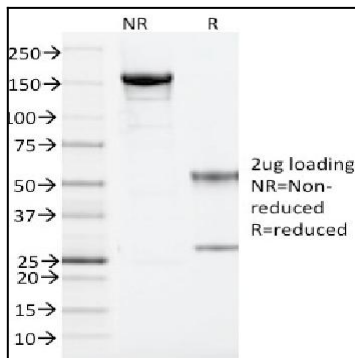


Fig. 6: SDS-PAGE Analysis Purified ARF1 Mouse Monoclonal Antibody (ARF1/2117). Confirmation of Integrity and Purity of the Antibody.