

36-2633: Anti-Catenin, gamma (Cardiomyocyte Marker) Monoclonal Antibody(Clone: rCTNG/1664)

Clonality :	Monoclonal
Clone Name :	rCTNG/1664
Application :	ELISA,FACS,IF,WB
Reactivity :	Human
Gene :	JUP
Gene ID :	3728
Uniprot ID :	P14923
Alternative Name :	ARVD12; Catenin (cadherin-associated protein), gamma 80kDa; Catenin gamma; CTNNG; Desmoplakin III; Desmoplakin-3; DP3; DP3I; Junction Plakoglobin; PDGB; PKGB
Isotype :	Mouse IgG1, kappa
Immunogen Information :	Recombinant human gamma catenin protein

Description

It recognizes a protein of 80-87kDa, identified as gamma-catenin. The catenins (-T-catenin, is located on chromosome 10, and mutations in this gene show a strong correlation to late-onset Alzheimer's disease (LOAD) as well as to dilated cardiomyopathy.

Product Info

Amount :	20 µg / 100 µg
Content :	200 µg/ml of Ab Purified from Bioreactor Concentrate by Protein A/G. Prepared in 10mM PBS with 0.05% BSA & 0.05% azide. Also available WITHOUT BSA & azide at 1.0mg/ml.
Storage condition :	Antibody with azide - store at 2 to 8°C. Antibody without azide - store at -20 to -80°C. Antibody is stable for 24 months. Non-hazardous.

Application Note

ELISA (For coating, order Ab without BSA); Flow Cytometry (1-2ug/million cells); Immunofluorescence (1-2ug/ml); Western Blot (1-2ug/ml);

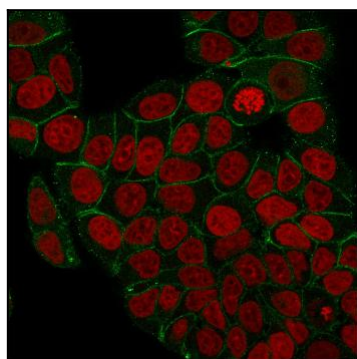


Fig. 1: Immunofluorescence staining of PFA-fixed MCF-7 cells with Catenin, gamma Mouse Monoclonal Antibody (rCTNG/1664) followed by goat anti-Mouse IgG-CF488 (Green). Nuclei are labeled with Reddot (Red).

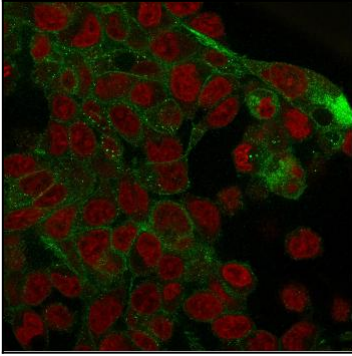


Fig. 2: Immunofluorescence staining of PFA-fixed HepG2 cells with Catenin, gamma Mouse Monoclonal Antibody (rCTNG/1664) followed by goat anti-Mouse IgG-CF488 (Green). Nuclei are labeled with Reddot (Red).

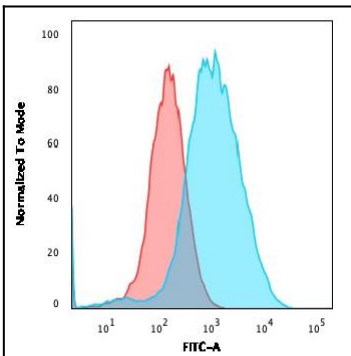


Fig. 3: Flow Cytometric Analysis of PFA-fixed MCF-7 cells using Catenin, gamma Mouse Monoclonal Antibody (rCTNG/1664) followed by goat anti-Mouse IgG-CF488 (Blue); Isotype Control (Red).