

36-2626: Anti-Involucrin (Squamous Cell Terminal Differentiation Marker) Monoclonal Antibody(Clone: rIVRN/827)

Clonality :	Monoclonal
Clone Name :	rIVRN/827
Application :	IHC
Reactivity :	Human
Gene :	IVL
Gene ID :	3713
Uniprot ID :	P07476
Alternative Name :	IVL
Isotype :	Mouse IgG1, kappa
Immunogen Information :	Recombinant human full-length Involucrin protein (IVRN)

Description

It recognizes a protein of 66kDa-170kDa, identified as involucrin. In Western blotting of cultured human keratinocytes, this MAAb reacts with a 120kDa protein. It stains the involucrin in a variety of sizes: 170kDa in MCF-7 cells, a doublet of ~115kDa and 150kDa in gorilla and owl monkey, 66kDa in dog, and a doublet of 105kDa in pig. Its epitope maps between codon 421-568 of human involucrin. Involucrin is expressed in a range of stratified squamous epithelia, including the cornea, which lacks a distinct cornified layer. In normal epidermis, it is first expressed in the upper spinous layers, and in keratinocyte cultures, all cells that have left the basal layer express it. Involucrin expression is altered in pathological conditions: in psoriasis and other benign epidermal hyperplasias, involucrin expression begins closer to the basal layer than normal; expression is abnormal in squamous cell carcinomas and premalignant lesions, and is reduced in severe dysplasias of the larynx and cervix.

Product Info

Amount :	20 µg / 100 µg
Content :	200 µg/ml of Ab Purified from Bioreactor Concentrate by Protein A/G. Prepared in 10mM PBS with 0.05% BSA & 0.05% azide. Also available WITHOUT BSA & azide at 1.0mg/ml.
Storage condition :	Antibody with azide - store at 2 to 8°C. Antibody without azide - store at -20 to -80°C. Antibody is stable for 24 months. Non-hazardous.

Application Note

Immunohistochemistry (Formalin-fixed) (0.1-0.2 µg/ml for 30 min at RT),(Staining of formalin-fixed tissues is enhanced by digestion with trypsin or Protease XXV at 1mg/ml PBS for 5 min at 37°C) (Note than enzyme digestion is better than citrate buffer based epitope unmasking),Optimal dilution for a specific application should be determined.

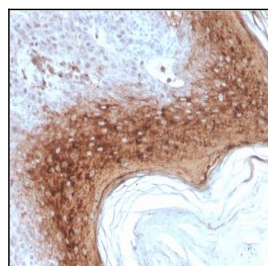


Fig. 1: Formalin-fixed, paraffin-embedded human Skin stained with Involucrin Mouse Recombinant Monoclonal Antibody (rIVRN/827).

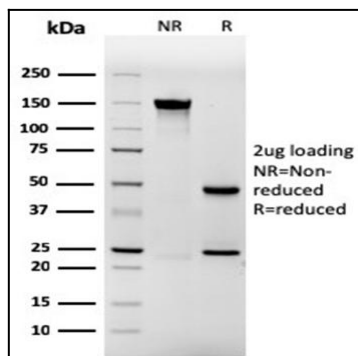


Fig. 2: SDS-PAGE Analysis Purified Involucrin Mouse Recombinant Monoclonal Antibody (rIVRN/827). Confirmation of Purity and Integrity of Antibody.