

36-2616: Anti-CD29 (Stem Cell Marker) Monoclonal Antibody(Clone: 12G10)

Clonality :	Monoclonal
Clone Name :	12G10
Application :	ELISA
Reactivity :	Human
Gene :	ITGB1
Gene ID :	3688
Uniprot ID :	P05556
Alternative Name :	Fibrinogen Receptor beta subunit; FNRB; Glycoprotein IIa (GPIIA); Integrin beta-1 (ITGB1); integrin VLA-4 beta subunit; MDF2; MSK12; Very Late Activation Protein beta Polypeptide; VLA-4 subunit beta; VLA-BETA; VLAB
Isotype :	Mouse IgG1, kappa
Immunogen Information :	Purified human beta 1 integrin from HT1080 fibrosarcoma cell extract.

Description

Recognizes CD29. Binds to the cell membrane of T- and B- lymphocytes, monocytes, platelets, fibroblasts, endothelial cells, mast cells and smooth muscle cells. CD29 is an adhesion receptor and co-stimulatory molecule. This antigen was initially characterized as GPIIa on platelets and as the common b1 subunit of the very late antigen (VLA) protein family. CD29 forms a non-covalent heterodimeric complex with integrin alpha subunits. It also mediates adhesion to invasion and thrombospondin.

Product Info

Amount :	20 µg / 100 µg
Content :	200 µg/ml of Ab Purified from Bioreactor Concentrate by Protein A/G. Prepared in 10mM PBS with 0.05% BSA & 0.05% azide. Also available WITHOUT BSA & azide at 1.0mg/ml.
Storage condition :	Antibody with azide - store at 2 to 8°C. Antibody without azide - store at -20 to -80°C. Antibody is stable for 24 months. Non-hazardous.

Application Note

ELISA (For coating use Ab at 1-5ug/ml, order Ab without BSA)

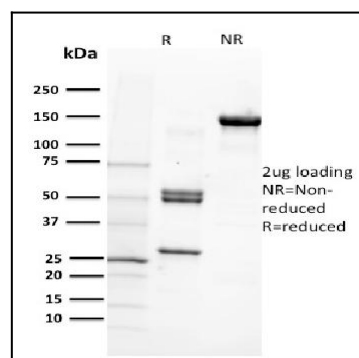


Fig. 1: SDS-PAGE Analysis Purified CD29 Mouse Monoclonal Antibody (12G10). Confirmation of Purity and Integrity of Antibody.