

36-2598: Anti-Insulin Receptor Alpha Monoclonal Antibody(Clone: INSR/1661)

Clonality :	Monoclonal
Clone Name :	INSR/1661
Application :	ELISA
Reactivity :	Human
Gene :	INSR
Gene ID :	3643
Uniprot ID :	P06213
Alternative Name :	CD220; HHF5; HINSR A; INSR; Insulin receptor; Insulin receptor subunit alpha; INSR
Isotype :	Mouse IgG1, kappa
Immunogen Information :	Recombinant fragment of extracellular domain of human Insulin Receptor alpha (exact sequence is proprietary)

Description

The insulin receptor (INSR) is a heterodimeric protein complex that has an intracellular subunit, which is disulfide-linked to a transmembrane segment. The insulin ligand binds to the INSR and initiates molecular signaling pathways that promote glucose uptake in cells and glycogen synthesis. Insulin binding to INSR induces phosphorylation of intra-cellular tyrosine kinase domains and recruitment of multiple SH2 and SH3 domain-containing intracellular proteins that serve as signaling intermediates for pleiotropic effects of insulin. Type 1 diabetes is an autoimmune condition of the endocrine pancreas that results in destruction of insulin secreting cells and a progressive loss in insulin-sensitive glucose uptake by cells.

Product Info

Amount :	20 µg / 100 µg
Content :	200 µg/ml of Ab Purified from Bioreactor Concentrate by Protein A/G. Prepared in 10mM PBS with 0.05% BSA & 0.05% azide. Also available WITHOUT BSA & azide at 1.0mg/ml.
Storage condition :	Antibody with azide - store at 2 to 8°C. Antibody without azide - store at -20 to -80°C. Antibody is stable for 24 months. Non-hazardous.

Application Note

ELISA (Use Ab at 2-4ug/ml for coating) (Order Ab without BSA)

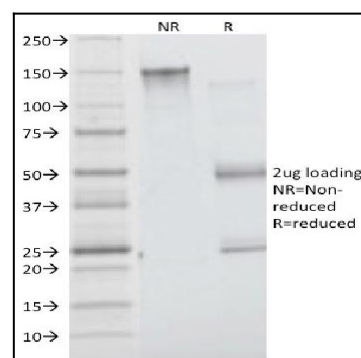


Fig. 1: SDS-PAGE Analysis Purified Insulin Receptor Mouse Monoclonal Antibody (INSR/1661). Confirmation of Integrity and Purity of Antibody.