

36-2593: Anti-Interleukin 10 (IL10) (Immuno-regulation Marker) Monoclonal Antibody(Clone: IL10/2651R)

| | |
|--------------------------------|--|
| Clonality : | Monoclonal |
| Clone Name : | IL10/2651R |
| Application : | IHC |
| Reactivity : | Human |
| Gene : | IL10 |
| Gene ID : | 3586 |
| Uniprot ID : | P22301 |
| Alternative Name : | Cytokine Synthesis Inhibitory Factor (CSIF); GVHDS; IL-10; IL10; IL10A; Interleukin-10; T-cell Growth Inhibitory Factor (TGIF) |
| Isotype : | Rabbit IgG |
| Immunogen Information : | Recombinant full-length human Interleukin 10 (IL10) protein |

Description

Interleukin 10 (IL10) is a cytokine produced primarily by monocytes and to a lesser extent by lymphocytes. This cytokine has pleiotropic effects in immuno-regulation and inflammation. It down-regulates the expression of Th1 cytokines, MHC class II antigens, and costimulatory molecules on macrophages. It also enhances B cell survival, proliferation, and antibody production. This cytokine can block NF-kappa B activity, and is involved in the regulation of the JAK-STAT signaling pathway. Knockout studies in mice suggested the function of this cytokine as an essential immuno-regulator in the intestinal tract. Mutations in this gene are associated with an increased susceptibility to HIV-1 infection and rheumatoid arthritis.

Product Info

| | |
|----------------------------|---|
| Amount : | 20 µg / 100 µg |
| Content : | 200 µg/ml of Ab Purified by Protein A. Prepared in 10mM PBS with 0.05% BSA & 0.05% azide. Also available WITHOUT BSA & azide at 1.0mg/ml. |
| Storage condition : | Antibody with azide - store at 2 to 8°C. Antibody without azide - store at -20 to -80°C. Antibody is stable for 24 months. Non-hazardous. |

Application Note

Immunohistochemistry (Formalin-fixed) (1-2ug/ml for 30 minutes at RT)(Staining of formalin-fixed tissues requires heating tissue sections in 10mM Tris with 1mM EDTA, pH 9.0, for 45 min at 95°C followed by cooling at RT for 20 minutes);

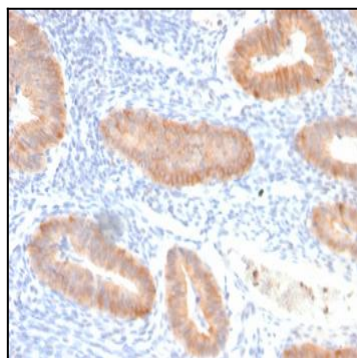


Fig. 1: Formalin-fixed, paraffin-embedded human endo-cervical carcinoma stained with Interleukin 10 Recombinant Rabbit Monoclonal Antibody (IL10/2651R).

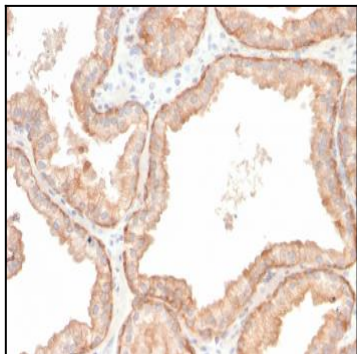


Fig. 2: Formalin-fixed, paraffin-embedded human prostate carcinoma stained with Interleukin 10 Recombinant Rabbit Monoclonal Antibody (IL10/2651R).

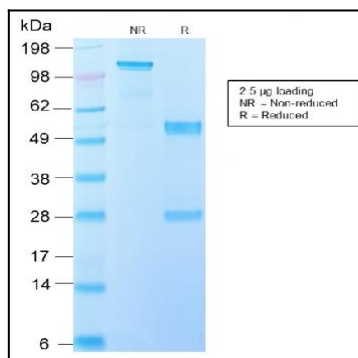


Fig. 3: SDS-PAGE Analysis Purified IL-10 Recombinant Rabbit Monoclonal Antibody (IL10/2651R). Confirmation of Integrity and Purity of Antibody.