

36-2581: Anti-Prostate Specific Antigen (PSA) Monoclonal Antibody(Clone: KLK3/2871R)

Clonality :	Monoclonal
Clone Name :	KLK3/2871R
Application :	IHC
Reactivity :	Human
Gene :	KLK3
Gene ID :	354
Uniprot ID :	P07288
Alternative Name :	Antigen, prostate-specific (APS), Gamma-seminoprotein, hK3, Kallikrein related peptidase 3, Kallikrein-3 (KLK3), KLK2A1, P-30 antigen, Semenogelase, Semin
Isotype :	Rabbit IgG
Immunogen Information :	Recombinant full-length human KLK3 protein

Description

Recognizes a single protein of 33-34kDa, identified as the prostate specific antigen (PSA). This MAb is highly specific to PSA and stains prostatic secretory and ductal epithelium in both normal and neoplastic tissues. PSA is a chymotrypsin-like serine protease (kallikrein family) exclusively produced by the prostate epithelium, and abundant in seminal fluid. PSA can be detected in the sera of patients with prostatic carcinoma. It is predominantly complexed to a liver-derived serine protease inhibitor, alpha-1-antichymotrypsin (ACT). A higher proportion of serum PSA is complexed to ACT in prostate cancer than in benign prostate hyperplasia. This MAb makes an excellent pair with MAb A67-B/E3 for PSA tests.

Product Info

Amount :	20 µg / 100 µg
Content :	200 µg/ml of Ab Purified from Bioreactor Concentrate by Protein A/G. Prepared in 10mM PBS with 0.05% BSA & 0.05% azide. Also available WITHOUT BSA & azide at 1.0mg/ml.
Storage condition :	Antibody with azide - store at 2 to 8°C. Antibody without azide - store at -20 to -80°C. Antibody is stable for 24 months. Non-hazardous.

Application Note

Immunohistochemistry (Formalin-fixed) (1-2ug/ml for 30 minutes at RT) (Staining of formalin-fixed tissues is enhanced by heating tissue sections in 10mM Tris with 1mM EDTA, pH 9.0 for 45 min at 95°C followed by cooling at RT for 20 minutes)

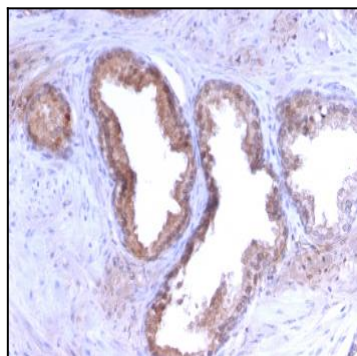


Fig. 1: Formalin-fixed, paraffin-embedded human Prostate Carcinoma stained with PSA Rabbit Recombinant Monoclonal Antibody (KLK3/2871R).

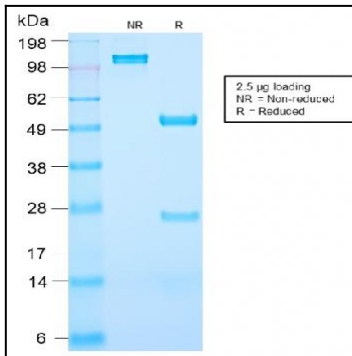


Fig. 2: SDS-PAGE Analysis Purified PSA Rabbit Recombinant Monoclonal Antibody (KLK3/2871R). Confirmation of Integrity and Purity of Antibody.

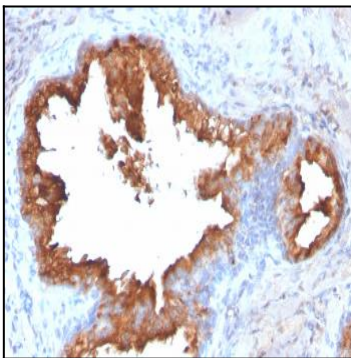


Fig. 3: Formalin-fixed, paraffin-embedded human Prostate Carcinoma stained with PSA Rabbit Recombinant Monoclonal Antibody (KLK3/2871R).