

## 36-2570: Anti-Kappa Light Chain / IGKC (B-Cell Marker) Monoclonal Antibody(Clone: KLC2886R)

<b>Clonality :</b>	Monoclonal
<b>Clone Name :</b>	KLC2886R
<b>Application :</b>	IHC
<b>Reactivity :</b>	Human
<b>Gene :</b>	IGKC
<b>Gene ID :</b>	3514
<b>Uniprot ID :</b>	P01601; P01834
<b>Alternative Name :</b>	HCAK1; Ig Kappa Chain C Region; IGKC; Immunoglobulin KM
<b>Isotype :</b>	Rabbit IgG
<b>Immunogen Information :</b>	Recombinant full-length human Ig kappa chain

### Description

This MAbs is specific to kappa light chain of immunoglobulin and shows no cross-reaction with lambda light chain or any of the five heavy chains. It recognizes human Ig kappa light chains of both secreted and cell surface immunoglobulin. It detects also free kappa light chains. In mammals, the two light chains in an antibody are always identical, with only one type of light chain, kappa or lambda. The ratio of Kappa to Lambda is 70:30. However, with the occurrence of multiple myeloma or other B-cell malignancies this ratio is disturbed. Antibody to the kappa light chain is reportedly useful in the identification of leukemias, plasmacytomas, and certain non-Hodgkin's lymphomas. Demonstration of clonality in lymphoid infiltrates indicates that the infiltrate is malignant.

### Product Info

<b>Amount :</b>	20 µg / 100 µg
<b>Content :</b>	200 µg/ml of Ab Purified from Bioreactor Concentrate by Protein A/G. Prepared in 10mM PBS with 0.05% BSA & 0.05% azide. Also available WITHOUT BSA & azide at 1.0mg/ml.
<b>Storage condition :</b>	Antibody with azide - store at 2 to 8°C. Antibody without azide - store at -20 to -80°C. Antibody is stable for 24 months. Non-hazardous.

### Application Note

Immunohistochemistry (Formalin-fixed) (1-2ug/ml for 30 min at RT)(Staining of formalin-fixed tissues requires heating tissue sections in 10mM Tris with 1mM EDTA, pH 9.0, for 45 min at 95&degC followed by cooling at RT for 20 minutes);

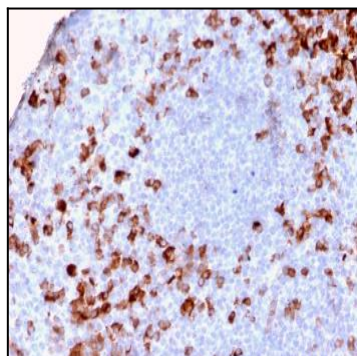


Fig. 1: Formalin-fixed, paraffin-embedded human Tonsil stained with Kappa Lt. Chain Recombinant Rabbit Monoclonal Antibody (KLC/2886R).

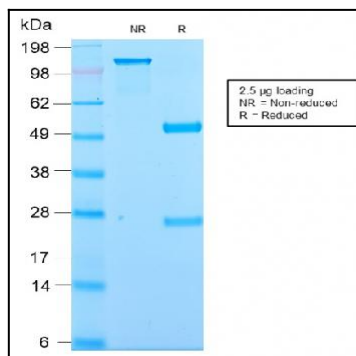


Fig. 2: SDS-PAGE Analysis Purified Kappa Lt. Chain Recombinant Rabbit Monoclonal (KLC2886R). Confirmation of Purity and Integrity of Antibody.