

36-2558: Anti-IgM (Immunoglobulin MuHeavy Chain) (B-Cell Marker) Monoclonal Antibody(Clone: IGHM/2559R)

Clonality :	Monoclonal
Clone Name :	IGHM/2559R
Application :	IHC
Reactivity :	Human
Gene :	IGHM
Gene ID :	3507
Uniprot ID :	P01871; P20769
Alternative Name :	AGM1; IGHM; Constant Region of Heavy Chain of IgM; Ig Mu Chain C Region
Isotype :	Rabbit IgG
Immunogen Information :	Heavy chain of human IgM

Description

Recognizes a protein of 75kDa, identified as mu heavy chain of human immunoglobulins. It does not cross-react with alpha (IgA), gamma (IgG), epsilon (IgE), or delta (IgD), heavy chains, T-cells, monocytes, granulocytes, or erythrocytes. Monomeric IgM is expressed as a membrane bound antibody on the surface of B cells and as a pentamer when secreted by plasma cells. IgM antibody is prominent in early immune responses to most antigens. Aberrant levels are associated with immune deficiency states, hereditary deficiencies, myeloma, Waldenstrom's macroglobulinemia, chronic infection and hepatocellular disease. This MAb is useful in the identification of leukemias, plasmacytomas, and certain non-Hodgkin's lymphomas. The most common feature of these malignancies is the restricted expression of a single heavy chain class. Demonstration of clonality in lymphoid infiltrates indicates that the infiltrate is clonal and therefore malignant.

Product Info

Amount :	20 µg / 100 µg
Content :	200 µg/ml of Ab Purified from Bioreactor Concentrate by Protein A/G. Prepared in 10mM PBS with 0.05% BSA & 0.05% azide. Also available WITHOUT BSA & azide at 1.0mg/ml.
Storage condition :	Antibody with azide - store at 2 to 8°C. Antibody without azide - store at -20 to -80°C. Antibody is stable for 24 months. Non-hazardous.

Application Note

Immunohistochemistry (Formalin-fixed) (1-2µg/ml for 30 minutes at RT)(Staining of formalin-fixed tissues is enhanced by heating tissue sections in 10mM Tris with 1mM EDTA, pH 9.0 for 45 min at 95°C followed by cooling at RT for 20 minutes)

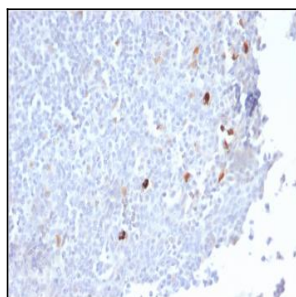


Fig. 1: Formalin-fixed, paraffin-embedded human Tonsil stained with IgM Rabbit Recombinant Monoclonal Antibody (IGHM/2559R).

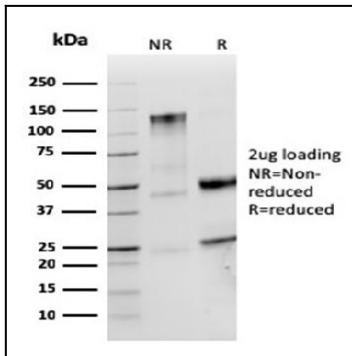


Fig. 2: SDS-PAGE Analysis Purified IgM Rabbit Recombinant Monoclonal Antibody (IGHM/2559R). Confirmation of Integrity and Purity of Antibody.