

36-2554: Anti-IgM (Immunoglobulin Mu Heavy Chain) (B-Cell Marker) Monoclonal Antibody(Clon: IM373)-CF488

Clonality :	Monoclonal
Clone Name :	IM373
Application :	FACS,IF,WB,IHC
Reactivity :	Human
Conjugate :	CF488
Gene :	IGHM
Gene ID :	3507
Uniprot ID :	P01871; P20769
Alternative Name :	AGM1; IGHM; Constant Region of Heavy Chain of IgM; Ig Mu Chain C Region
Isotype :	Mouse IgG2b, kappa
Immunogen Information :	Recombinant full-length heavy chain of human IgM

Description

Recognizes a protein of 75kDa, identified as mu heavy chain of human immunoglobulins. It does not cross-react with alpha (IgA), gamma (IgG), epsilon (IgE), or delta (IgD), heavy chains, T-cells, monocytes, granulocytes, or erythrocytes. This MAb is useful in the identification of leukemias, plasmacytomas, and certain non-Hodgkin's lymphomas. The most common feature of these malignancies is the restricted expression of a single heavy chain class. Demonstration of clonality in lymphoid infiltrates indicates that the infiltrate is clonal and therefore malignant.

Product Info

Amount :	0.5 ml at 100µg/ml
Content :	200 µg/ml of Ab Purified from Bioreactor Concentrate by Protein A/G. Prepared in 10mM PBS with 0.05% BSA & 0.05% azide. Also available WITHOUT BSA & azide at 1.0mg/ml.
Storage condition :	Antibody with azide - store at 4 to 8°C. Antibody is stable for 24 months. Non-hazardous.

Application Note

Flow Cytometry (1-2ug/million cells); Immunofluorescence (1-2ug/ml); Western Blot (1-2ug/ml); Immunohistochemistry (Formalin-fixed) (1-2ug/ml for 30 minutes at RT)(Staining of formalin-fixed tissues requires heating tissue sections in 10mM Tris with 1mM EDTA, pH 9.0, for 45 min at 95°C followed by cooling at RT for 20 minutes);

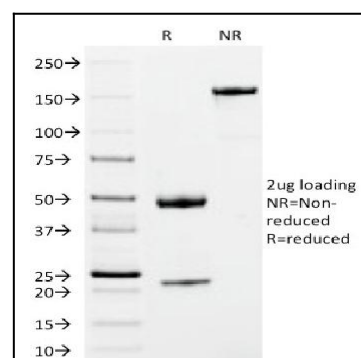


Fig. 1: SDS-PAGE Analysis Purified IgM Mouse Monoclonal Antibody (IM373). Confirmation of Integrity and Purity of Antibody.