

36-2542: Anti-IgG (Immunoglobulin Gamma Heavy Chain) (B-Cell Marker) Monoclonal Antibody(Clone: IG266)-CF488

Clonality :	Monoclonal
Clone Name :	IG266
Application :	FACS,IF,IHC
Reactivity :	Human
Conjugate :	CF488
Gene :	IGHG
Gene ID :	3500; 3501; 3502; 3503
Uniprot ID :	P01857; P01859; P01860; P01861
Alternative Name :	G1m Marker; G2m Marker; G3m Marker; G4m Marker; HDC; Heavy Chain Disease Protein; Human Immunglobulin G; Ig gamma1/2/3/4 Chain C Region; IGHG1; IGHG2; IGHG3; IGHG4; Immunoglobulin Heavy Constant 1/2/3/4
Isotype :	Mouse IgG2a, kappa
Immunogen Information :	Purified human Ig Gamma Chain

Description

Recognizes a protein of 75kDa, identified as gamma heavy chain of human immunoglobulins. It does not cross-react with alpha (IgA), mu (IgM), epsilon (IgE), or delta (IgD), heavy chains, T-cells, monocytes, granulocytes, or erythrocytes. This MAb is useful in the identification of leukemias, plasmacytomas, and certain non-Hodgkin's lymphomas. The most common feature of these malignancies is the restricted expression of a single heavy chain class. Demonstration of clonality in lymphoid infiltrates indicates that the infiltrate is clonal and therefore malignant.

Product Info

Amount :	0.5 ml at 100µg/ml
Content :	200 µg/ml of Ab Purified from Bioreactor Concentrate by Protein A/G. Prepared in 10mM PBS with 0.05% BSA & 0.05% azide. Also available WITHOUT BSA & azide at 1.0mg/ml.
Storage condition :	Antibody with azide - store at 4 to 8°C. Antibody is stable for 24 months. Non-hazardous.

Application Note

Flow Cytometry (1-2ug/million cells); Immunofluorescence (1-2ug/ml); Immunohistochemistry (Formalin-fixed) (1-2ug/ml for 30 minutes at RT)(Staining of formalin-fixed tissues requires heating tissue sections in 10mM Tris with 1mM EDTA, pH 9.0, for 45 min at 95°C followed by cooling at RT for 20 minutes);

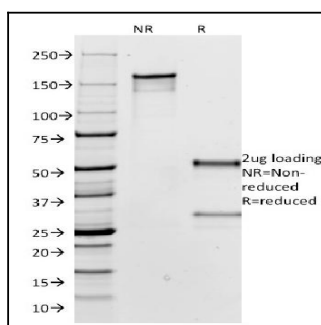


Fig. 1: SDS-PAGE Analysis Purified IgG Mouse Monoclonal Antibody (IG266). Confirmation of Integrity and Purity of Antibody.

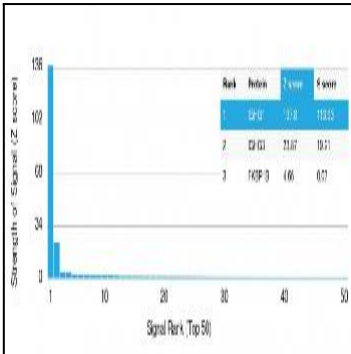


Fig. 2: Analysis of Protein Array containing more than 19,000 full-length human proteins using Anti-IgG Mouse Monoclonal Antibody (IG266). Z- and S- Score: The Z-score represents the strength of a signal that a monoclonal antibody (Monoclonal Antibody) (in combination with a fluorescently-tagged anti-IgG secondary antibody) produces when binding to a particular protein on the HuProt™ array. Z-scores are described in units of standard deviations (SD's) above the mean value of all signals generated on that array. If targets on HuProt™ are arranged in descending order of the Z-score, the S-score is the difference (also in units of SD's) between the Z-score. S-score therefore represents the relative target specificity of a Monoclonal Antibody to its intended target. A Monoclonal Antibody is considered to specific to its intended target, if the Monoclonal Antibody has an S-score of at least 2.5. For example, if a Monoclonal Antibody binds to protein X with a Z-score of 43 and to protein Y with a Z-score of 14, then the S-score for the binding of that Monoclonal Antibody to protein X is equal to 29.