

36-2534: Anti-Insulin-like Growth Factor-1 (IGF-1) Monoclonal Antibody(Clone: IGF1/2872R)

Clonality :	Monoclonal
Clone Name :	IGF1/2872R
Application :	ELISA,FACS,IF
Reactivity :	Human, Mouse, Rat
Gene :	IGF1
Gene ID :	3479
Uniprot ID :	P05019
Alternative Name :	Insulin-like Growth Factor IA (IGF-IA); Insulin-like Growth Factor IB (IGF-IB); Mechano Growth Factor (MGF); Somatomedin-C
Isotype :	Rabbit IgG
Immunogen Information :	Recombinant full-length human IGF-1 protein

Description

This antibody is specific to Insulin-like Growth Factor (IGF-1) and shows minimal cross-reaction with IGF-11, Proinsulin, MSF, and Insulin. IGF-1 is a polypeptide growth factor with two isoforms that are produced by alternative splicing. Isoform 1 is also known as IGF-IB while isoform 2 is known as IGF-IA. IGF-1 stimulates the proliferation of a wide range of cell types including muscle, bone and cartilage tissue. It functions as an autocrine regulator of growth. Activation of IGF system has emerged as a key factor for tumor progression and resistance to apoptosis in many cancers like those of breast, thyroid and colon.

Product Info

Amount :	20 µg / 100 µg
Content :	200 µg/ml of Ab Purified from Bioreactor Concentrate by Protein A/G. Prepared in 10mM PBS with 0.05% BSA & 0.05% azide. Also available WITHOUT BSA & azide at 1.0mg/ml.
Storage condition :	Antibody with azide - store at 2 to 8°C. Antibody without azide - store at -20 to -80°C. Antibody is stable for 24 months. Non-hazardous.

Application Note

ELISA (For coating, order antibody without BSA); Flow Cytometry (1-2ug/million cells); Immunofluorescence (1-2ug/ml);

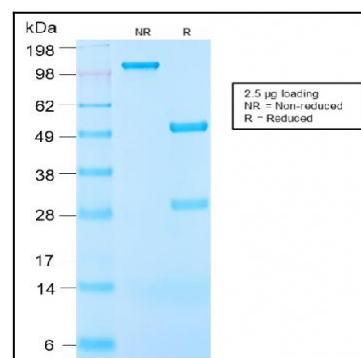


Fig. 1: SDS-PAGE Analysis Purified IGF-1 Rabbit Recombinant Monoclonal Antibody (IGF1/2872R). Confirmation of Purity and Integrity of Antibody.

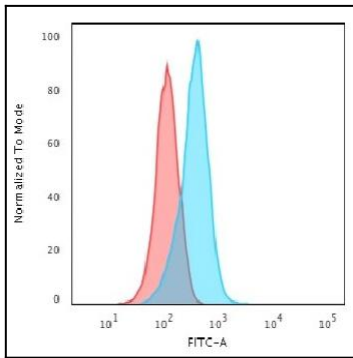


Fig. 2: Flow Cytometric Analysis of human K562 cells using IGF-1 Rabbit Recombinant Monoclonal Anitbody (IGF1/2872R) followed by Goat anti-Mouse IgG-CF488 (Blue); Isotype control (Red).