

36-2492: Anti-HLA-DRB (MHC II) Monoclonal Antibody(Clone: DA2)

Clonality :	Monoclonal
Clone Name :	DA2
Application :	FACS,IF,WB,IHC
Reactivity :	Human
Gene :	HLA-DRB1
Gene ID :	3123
Uniprot ID :	P01911
Alternative Name :	DRB1; HLA class II histocompatibility antigen, DR-1 beta chain; HLA-DR-beta 1; HLA-DRB1; human leucocyte antigen DRB1; Leucocyte antigen DR beta 1 chain; lymphocyte antigen DRB1; major histocompatibility complex, class II, DR beta 1; MHC class II HLA-DR beta 1 chain; MHC class II HLA-DR-beta cell surface glycoprotein
Isotype :	Mouse IgG2b, kappa
Immunogen Information :	Activated human peripheral blood mononuclear cells

Description

This MAb reacts with a 28kDa chain of HLA-DRB1 antigen, a member of MHC class II molecules. It does not cross react with HLA-DP and HLA-DQ. The L243 antibody recognizes a different epitope than the LN3 monoclonal antibody, and these antibodies do not cross-block binding to each other's respective epitopes. HLA-DR is a heterodimeric cell surface glycoprotein comprised of a 36kDa alpha (heavy) chain and a 28kDa beta (light) chain. It is expressed on B-cells, activated T-cells, monocytes/macrophages, dendritic cells and other non-professional APCs. In conjunction with the CD3/TCR complex and CD4 molecules, HLA-DR is critical for efficient peptide presentation to CD4+ T cells. It is an excellent histiocytic marker in paraffin sections producing intense staining. True histiocytic neoplasms are similarly positive. HLA-DR antigens also occur on a variety of epithelial cells and their corresponding neoplastic counterparts. Loss of HLA-DR expression is related to tumor microenvironment and predicts adverse outcome in diffuse large B-cell lymphoma.

Product Info

Amount :	20 µg / 100 µg
Content :	200 µg/ml of Ab Purified from Bioreactor Concentrate by Protein A/G. Prepared in 10mM PBS with 0.05% BSA & 0.05% azide. Also available WITHOUT BSA & azide at 1.0mg/ml.
Storage condition :	Antibody with azide - store at 2 to 8°C. Antibody without azide - store at -20 to -80°C. Antibody is stable for 24 months. Non-hazardous.

Application Note

Flow Cytometry (1-2ug/million cells); Immunofluorescence (1-2ug/ml); Western Blot (1-2ug/ml); Immunohistochemistry (Formalin-fixed) (0.25-0.5ug/ml for 30 minutes at RT)(Staining of formalin-fixed tissues requires heating tissue sections in 10mM Tris with 1mM EDTA, pH 9.0, for 45 min at 95°C followed by cooling at RT for 20 minutes);

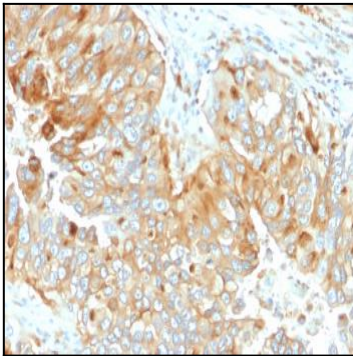


Fig. 1: Formalin-fixed, paraffin-embedded human Endometrium stained with HLA-DR Mouse Monoclonal Antibody (DA2).

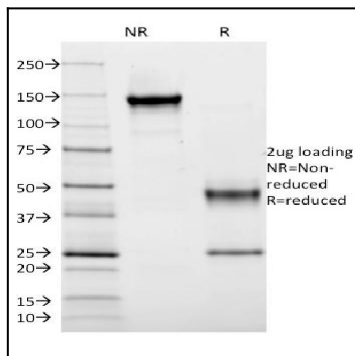


Fig. 2: SDS-PAGE Analysis Purified HLA-DR Mouse Monoclonal Antibody (DA2). Confirmation of Purity and Integrity of Antibody.