

36-2488: Anti-HLA-DRA (MHC II) Monoclonal Antibody(Clone: 169-1B5.2)

Clonality :	Monoclonal
Clone Name :	169-1B5.2
Application :	FACS,IF
Reactivity :	Human
Gene :	HLA-DRA
Gene ID :	3122
Uniprot ID :	P01903
Alternative Name :	DR alpha chain; HLA class II histocompatibility antigen; HLA class II histocompatibility antigen DR alpha chain; HLA DRA; HLA DRA1; HLA-DRA; HLADRA1; Major histocompatibility complex class II DR alpha; MHC cell surface glycoprotein; MHC class II antigen DRA
Isotype :	Mouse IgG2b, kappa
Immunogen Information :	Human peripheral blood leukocytes

Description

This antibody detects a monomorphic general framework determinant of HLA-DR Class II antigen. It does not cross react with HLA-DP and HLA-DQ. HLA-DR is a heterodimeric cell surface glycoprotein comprised of a 36kDa alpha (heavy) chain and a 28kDa beta (light) chain. It is expressed on B-cells, activated T-cells, monocytes/macrophages, dendritic cells and other non-professional APCs. In conjunction with the CD3/TCR complex and CD4 molecules, HLA-DR is critical for efficient peptide presentation to CD4+ T cells. It is an excellent histiocytic marker in paraffin sections producing intense cytoplasmic staining. True histiocytic neoplasms are similarly positive. HLA-DR antigens also occur on a variety of epithelial cells and their corresponding neoplastic counterparts.

Product Info

Amount :	20 µg / 100 µg
Content :	200 µg/ml of Ab Purified from Bioreactor Concentrate by Protein A/G. Prepared in 10mM PBS with 0.05% BSA & 0.05% azide. Also available WITHOUT BSA & azide at 1.0mg/ml.
Storage condition :	Antibody with azide - store at 2 to 8°C. Antibody without azide - store at -20 to -80°C. Antibody is stable for 24 months. Non-hazardous.

Application Note

Flow Cytometry (1-2ug/million cells); Immunofluorescence (1-2ug/ml);

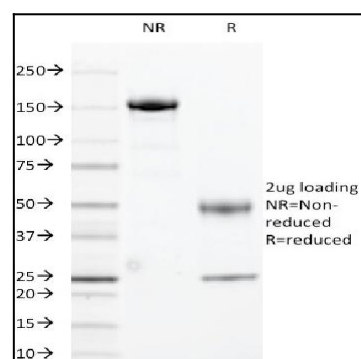


Fig. 1: SDS-PAGE Analysis Purified HLA-DRA Mouse Monoclonal Antibody (169-1B5.2). Confirmation of Integrity and Purity of Antibody.

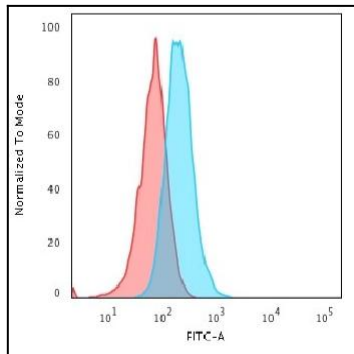


Fig. 2: Flow Cytometric Analysis of PFA-fixed Raji cells. HLA-DRA Mouse Monoclonal Antibody (169-1B5.2) followed by Goat anti-Mouse IgG-CF488 (Blue); Isotype Control (Red).