

36-2486: Anti-HLA-DRA (MHC II) Monoclonal Antibody(Clone: IPO-10)

Clonality :	Monoclonal
Clone Name :	IPO-10
Application :	FACS,IF
Reactivity :	Human
Gene :	HLA-DRA
Gene ID :	3122
Uniprot ID :	P01903
Alternative Name :	DR alpha chain; HLA class II histocompatibility antigen; HLA class II histocompatibility antigen DR alpha chain; HLA DRA; HLA DRA1; HLA-DRA; HLADRA1; Major histocompatibility complex class II DR alpha; MHC cell surface glycoprotein; MHC class II antigen DRA
Isotype :	Mouse IgG3, kappa
Immunogen Information :	Spleen cells of a patient with hairy cell leukemia (Daudi cells)

Description

MAb IPO-10 defines the antigen, which appears on B cell progenitors following HLA-DR and preceding CD10, CD19, CD22, CD37 and cym. It is expressed on resting B cells and than reappears and persists in cytoplasm and on cell surface until cytoplasmic Ig appears. It is a useful antibody for diagnostics of neoplasms of B cell origins. It reacts with human B cell lines Daudi, Raji, Namalva, EB-3, RPMI-8226 (50% of cells). The MAb does not label T cell lines, blood granulocytes, thymocytes or bone marrow stromal fibroblasts. No significant changes are detected after PHA or ConA stimulation while LPS and PWM stimulated cultures after 18-48h show decreased number of antigen-positive cells but in final terms of cultivation antigen is expressed again. This MAb labels B cell leukemias and some lymphomas. Hairy cell leukemia strongly reacts and 70% of B cell CLL and some B-NHL were also positive. IPO-10 reacts with AMML cells and in a majority of Hodgkin's disease cases a significant percentage of affected lymph node cells were detected. '

Product Info

Amount :	20 µg / 100 µg
Content :	200 µg/ml of Ab Purified from Bioreactor Concentrate by Protein A/G. Prepared in 10mM PBS with 0.05% BSA & 0.05% azide. Also available WITHOUT BSA & azide at 1.0mg/ml.
Storage condition :	Antibody with azide - store at 2 to 8°C. Antibody without azide - store at -20 to -80°C. Antibody is stable for 24 months. Non-hazardous.

Application Note

Flow Cytometry (1-2ug/million cells); Immunofluorescence (1-2ug/ml);

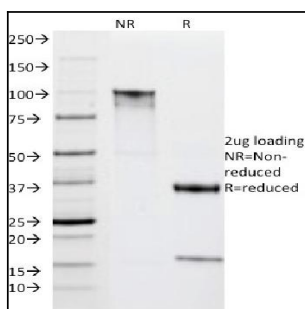


Fig. 1: SDS-PAGE Analysis Purified HLA-DRA Mouse Monoclonal Antibody (IPO-10). Confirmation of Integrity and Purity of Antibody.