

36-2481: Anti-HLA-DP (MHC II) Monoclonal Antibody(Clone: HLA-DPB1/2862R)

Clonality :	Monoclonal
Clone Name :	HLA-DPB1/2862R
Application :	ELISA,FACS,IF
Reactivity :	Human
Gene :	HLA-DPB1
Gene ID :	3115
Uniprot ID :	P04440
Alternative Name :	HLA class II histocompatibility antigen DP alpha 1 chain; HLA DP1A; HLA SB alpha chain; HLADP; HLADPA1; HLASB; HLASB histocompatibility type; Human MHC class II HLA SB alpha; Major histocompatibility complex class II DP alpha 1; MHC class II DP3 alpha; MHC class II DPA1; PLT1; Primed lymphocyte test 1
Isotype :	Rabbit IgG
Immunogen Information :	Non-T, non-B human acute lymphoblastic leukemia REH6 cell line

Description

Recognizes a non-polymorphic determinant of DP-MHC class II. MHC class II antigens are transmembrane glycoproteins of non-covalently linked alpha (33-35kDa) and beta (27-30kDa) chains. It reportedly reacts with B- non-T, non-B cell lines but not with T- and myeloid cell lines and leukemias. Differential expression of MHC class II antigens on fetal and adult lymphocytes, malignant B cells appears to reflect the stage of cell differentiation which may be useful in the study of lymphoproliferative disorders.

Product Info

Amount :	20 µg / 100 µg
Content :	200 µg/ml of Ab Purified from Bioreactor Concentrate by Protein A/G. Prepared in 10mM PBS with 0.05% BSA & 0.05% azide. Also available WITHOUT BSA & azide at 1.0mg/ml.
Storage condition :	Antibody with azide - store at 2 to 8°C. Antibody without azide - store at -20 to -80°C. Antibody is stable for 24 months. Non-hazardous.

Application Note

ELISA (For coating use Ab at 2-4ug/ml, order Ab without BSA);Flow Cytometry (1-2ug/million cells);Immunofluorescence (1-2ug/ml);

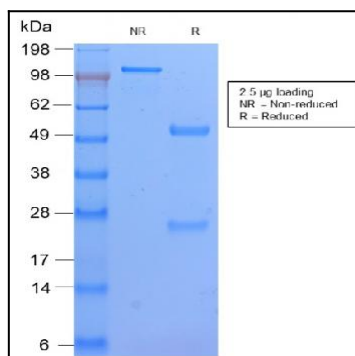


Fig. 1: SDS-PAGE Analysis Purified HLA-DP Rabbit Recombinant Monoclonal Ab (HLA-DPB1/2862R). Confirmation of Purity and Integrity of Antibody.

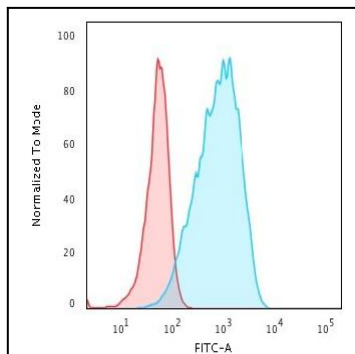


Fig. 2: Flow Cytometric Analysis of Raji cells HLA-DP Rabbit Recombinant Monoclonal Antibody (HLA-DPB1/2862R) followed by goat anti-Rabbit IgG-CF488 (Blue); Isotype Control (Red).

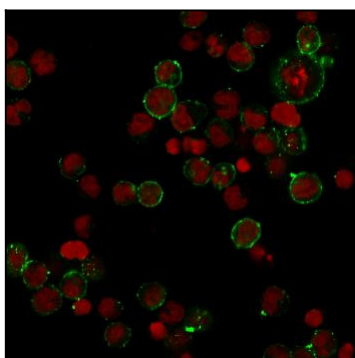


Fig. 3: Immunofluorescence Analysis of Human Raji cells labeling HLA-DP with HLA-DP Rabbit Recombinant Monoclonal (HLA-DPB1/2862R) followed by Goat anti-rabbit IgG-CF488 (Green). The nuclear counterstain is Reddot (Red).