

36-2475: Anti-HLA-B (MHC Class I) Monoclonal Antibody(Clone: JOAN-1)

Clonality :	Monoclonal
Clone Name :	JOAN-1
Application :	FACS,IF
Reactivity :	Human
Gene :	HLA-B
Gene ID :	3106
Uniprot ID :	P01889
Alternative Name :	HLA-B, HLAB, MHC Class I HLA heavy chain, Leukocyte antigen class I-B
Isotype :	Mouse IgG3, kappa
Immunogen Information :	Normal human peripheral blood lymphocytes

Description

HLA-B belongs to the HLA class I heavy chain paralogues. This class I molecule is a heterodimer consisting of a heavy chain and a light chain (beta-2 microglobulin). The heavy chain is anchored in the membrane. Class I molecules play a central role in the immune system by presenting peptides derived from the endoplasmic reticulum lumen. They are expressed in nearly all cells. The heavy chain is approximately 45kDa and its gene contains 8 exons. Exon 1 encodes the leader peptide, exon 2 and 3 encode the alpha1 and alpha2 domains, which both bind the peptide, exon 4 encodes the alpha3 domain, exon 5 encodes the transmembrane region and exons 6 and 7 encode the cytoplasmic tail. Polymorphisms within exon 2 and exon 3 are responsible for the peptide binding specificity of each class one molecule. Typing for these polymorphisms is routinely done for bone marrow and kidney transplantation. Hundreds of HLA-B alleles have been described.

Product Info

Amount :	20 µg / 100 µg
Content :	200 µg/ml of Ab Purified from Bioreactor Concentrate by Protein A/G. Prepared in 10mM PBS with 0.05% BSA & 0.05% azide. Also available WITHOUT BSA & azide at 1.0mg/ml.
Storage condition :	Antibody with azide - store at 2 to 8°C. Antibody without azide - store at -20 to -80°C. Antibody is stable for 24 months. Non-hazardous.

Application Note

Flow Cytometry (1-2ug/million cells); Immunofluorescence (1-2ug/ml);

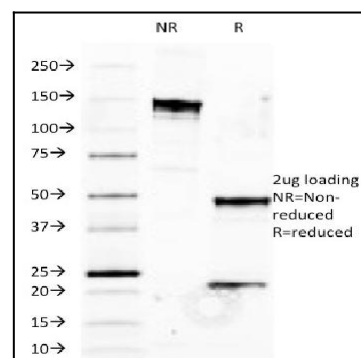


Fig. 1: SDS-PAGE Analysis Purified HLA-B Mouse Monoclonal Antibody (JOAN-1). Confirmation of Integrity and Purity of Antibody.