

36-2462: Anti-Annexin A1 / (Hairy Cell Leukemia Marker) Monoclonal Antibody(Clone: 5E4/1)

Clonality :	Monoclonal
Clone Name :	5E4/1
Application :	ELISA,FACS,IF
Reactivity :	Human
Gene :	ANXA1
Gene ID :	301
Uniprot ID :	P04083
Alternative Name :	ANXA1; ANX1; Annexin-1; Chromobindin-9; LPC1; p35
Isotype :	Mouse IgG1, kappa
Immunogen Information :	Mixture of native proteins from human bone tissues

Description

The ANXA1 gene belongs to the annexin family, and contains 4 annexin repeats. A pair of annexin repeats may form one binding site for calcium and a phospholipid. ANXA1 promotes membrane fusion and is involved in exocytosis. The gene for ANXA1 is upregulated in hairy cell leukemia (HCL), and its protein expression is specific for HCL. Detection of ANXA1 provides a simple, highly sensitive and specific assay for diagnosing HCL. Annexin A1 has also been found to be protective against DNA damage induced by heat in breast cancer cells, suggesting it is involved in tumor suppressive and protective activities, and also is associated with treatment resistance.

Product Info

Amount :	20 µg / 100 µg
Content :	200 µg/ml of Ab Purified from Bioreactor Concentrate by Protein A/G. Prepared in 10mM PBS with 0.05% BSA & 0.05% azide. Also available WITHOUT BSA & azide at 1.0mg/ml.
Storage condition :	Antibody with azide - store at 2 to 8°C. Antibody without azide - store at -20 to -80°C. Antibody is stable for 24 months. Non-hazardous.

Application Note

ELISA (For coating, order antibody without BSA); Flow Cytometry (1-2ug/million cells); Immunofluorescence (1-2ug/ml);

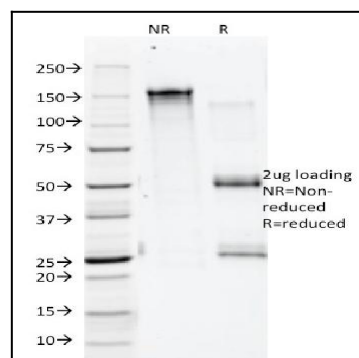


Fig. 1: SDS-PAGE Analysis Purified Annexin A1 Mouse Monoclonal Antibody (ANEX 5E4/1). Confirmation of Integrity and Purity of the Antibody.

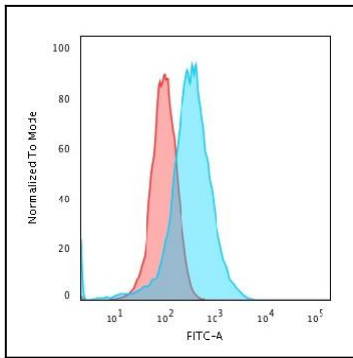


Fig. 2: Flow Cytometric Analysis of paraformaldehyde-fixed K562 cells. Annexin A1 Mouse Monoclonal Antibody (ANEX 5E4/1) followed by goat anti-Mouse IgG-CF488 (Blue); Isotype Control (Red)