

36-2460: Anti-Annexin A1 / (Hairy Cell Leukemia Marker) Monoclonal Antibody(Clone: CPTC-ANXA1-1)

Clonality :	Monoclonal
Clone Name :	CPTC-ANXA1-1
Application :	IP,WB,IHC
Reactivity :	Human
Gene :	ANXA1
Gene ID :	301
Uniprot ID :	P04083
Alternative Name :	ANXA1; ANX1; Annexin-1; Chromobindin-9; LPC1; p35
Isotype :	Mouse IgG2a, kappa
Immunogen Information :	Recombinant full-length human Annexin A1 protein

Description

The ANXA1 gene belongs to the annexin family, and contains 4 annexin repeats. A pair of annexin repeats may form one binding site for calcium and a phospholipid. ANXA1 promotes membrane fusion and is involved in exocytosis. The gene for ANXA1 is upregulated in hairy cell leukemia (HCL), and its protein expression is specific for HCL. Detection of ANXA1 provides a simple, highly sensitive and specific assay for diagnosing HCL. Annexin A1 has also been found to be protective against DNA damage induced by heat in breast cancer cells, suggesting it is involved in tumor suppressive and protective activities, and also is associated with treatment resistance.

Product Info

Amount :	20 µg / 100 µg
Content :	200 µg/ml of Ab Purified from Bioreactor Concentrate by Protein A/G. Prepared in 10mM PBS with 0.05% BSA & 0.05% azide. Also available WITHOUT BSA & azide at 1.0mg/ml.
Storage condition :	Antibody with azide - store at 2 to 8°C. Antibody without azide - store at -20 to -80°C. Antibody is stable for 24 months. Non-hazardous.

Application Note

Immunoprecipitation (2-4ug/mg protein); Western Blot (1-2ug/ml); Immunohistochemistry (Formalin-fixed) (1-2ug/ml for 30 min at RT),(Staining of formalin-fixed tissues requires heating tissue sections in 10mM Tris with 1mM EDTA, pH 9.0, for 45 min at 95°C followed by cooling at RT for 20 minutes);

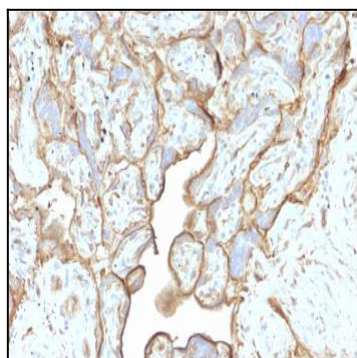


Fig. 1: Formalin-fixed, paraffin-embedded human Placenta stained with Annexin A1 Mouse Monoclonal Antibody (CPTC-ANXA1-1).

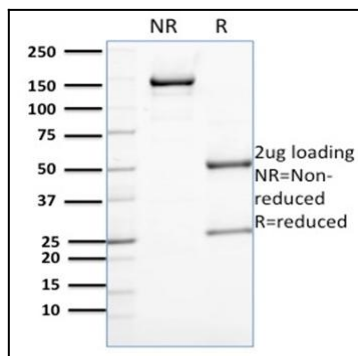


Fig. 2: SDS-PAGE Analysis Purified Annexin A1 Mouse Monoclonal Antibody (CPTC-ANXA1-1). Confirmation of Purity and Integrity of Antibody.

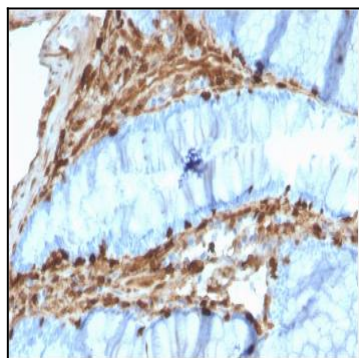


Fig. 3: Formalin-fixed, paraffin-embedded human Colon Carcinoma stained with Annexin A1 Mouse Monoclonal Antibody (CPTC-ANXA1-1).

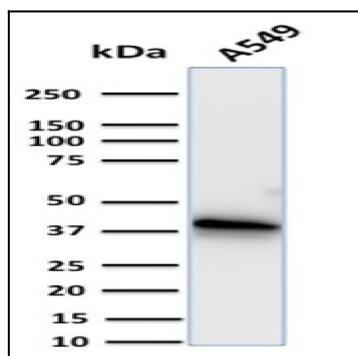


Fig. 4: Western Blot Analysis of human A549 cell lysate using Annexin A1 Mouse Monoclonal Antibody (CPTC-ANXA1-1).