

36-2432: Anti-PD-L1 / PDCD1LG1 / CD274 / B7-H1 (Cancer Immunotherapy Target) Monoclonal Antibody(Clone: PDL1/2746)-PE

Clonality :	Monoclonal
Clone Name :	PDL1/2746
Application :	FACS,IF
Reactivity :	Human
Conjugate :	PE
Gene :	CD274
Gene ID :	29126
Uniprot ID :	Q9NZQ7
Alternative Name :	B7 homolog 1; B7-H1; CD274; PD-L1; PDCD1 ligand 1; PDCD1L1; PDCD1LG1; Programmed cell death 1 ligand 1
Isotype :	Mouse IgG2b, kappa
Immunogen Information :	Recombinant fragment (around aa 39-191) of human CD274 (PD-L1) protein (exact sequence is proprietary)

Description

PD-L1 is a checkpoint regulator in immune cells, it is expressed on immune or non-hematopoietic cells. Expression of the protein is seen during pregnancy where it has a role in suppressing the immune system. PD-L1 induces an inhibitory signal in activated T-cells and promotes T-cell apoptosis. It is overexpressed in a number of different cancers where it is believed to play a significant role in the cancer's ability to evade the immune system.

Product Info

Amount :	0.5 ml at 100µg/ml
Content :	200 µg/ml of Ab Purified from Bioreactor Concentrate by Protein A/G. Prepared in 10mM PBS with 0.05% BSA & 0.05% azide. Also available WITHOUT BSA & azide at 1.0mg/ml.
Storage condition :	Antibody with azide - store at 4 to 8°C. Antibody is stable for 24 months. Non-hazardous.

Application Note

Flow Cytometry (1-2ug/million cells); Immunofluorescence (1-2ug/ml);,

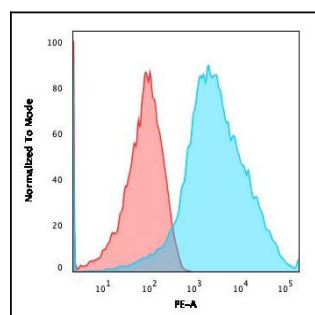


Fig. 1: Flow Cytometric Analysis of human Jurkat cells using PE conjugated PD-L1 Mouse Monoclonal Antibody (PDL1/2746) (blue) Isotype Control (Red).

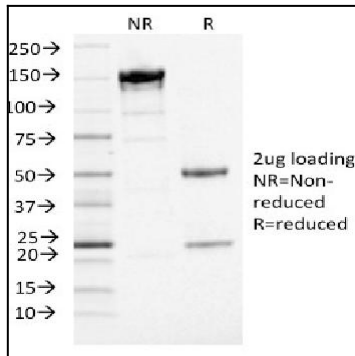


Fig. 2: SDS-PAGE Analysis Purified PD-L1 Mouse Monoclonal Antibody (PDL1/2746) (unconjugated). Confirmation of Purity and Integrity of Antibody.