

## 36-2422: Anti-Galectin-13 (GAL13) / Placental Protein 13 (PP13) Monoclonal Antibody(Clone: PP13/1161)

<b>Clonality :</b>	Monoclonal
<b>Clone Name :</b>	PP13/1161
<b>Application :</b>	FACS,IF,WB,IHC
<b>Reactivity :</b>	Human
<b>Gene :</b>	LGALS13
<b>Gene ID :</b>	29124
<b>Uniprot ID :</b>	Q9UHV8
<b>Alternative Name :</b>	Gal-13; GAL13; Galactoside-binding soluble lectin 13; Galectin-13; Galectin13; Lectin galactoside binding soluble 13; LGALS13; PLAC8; Placental protein 13 (PP13); Placental tissue protein 13
<b>Isotype :</b>	Mouse IgG2b, kappa
<b>Immunogen Information :</b>	Recombinant human Galectin-13 protein fragment (aa23-134)

### Description

It recognizes a 32kDa protein, which is identified as homodimer of galectin-13 (also known as PP13). Galectins are a family of soluble -galactoside-binding lectins that modulate cell-to-cell adhesion and cell-to-extracellular matrix (ECM) interactions and play a role in tumor progression, pre-mRNA splicing and apoptosis. One such member, galectin-13, is a 139 amino acid protein that contains one galectin domain. Possessing lysophospholipase activity, galectin-13 exists as a disulfide-linked homodimer. Galectin-13 is suggested to have a developmental role in the placenta and may display immunobiological activity in feto-maternal blood-spaces. Screening for galectin-13 in maternal serum during the first trimester of pregnancy may serve as a diagnostic marker to predict preterm pre-eclampsia.

### Product Info

<b>Amount :</b>	20 µg / 100 µg
<b>Content :</b>	200 µg/ml of Ab Purified from Bioreactor Concentrate by Protein A/G. Prepared in 10mM PBS with 0.05% BSA & 0.05% azide. Also available WITHOUT BSA & azide at 1.0mg/ml.
<b>Storage condition :</b>	Antibody with azide - store at 2 to 8°C. Antibody without azide - store at -20 to -80°C. Antibody is stable for 24 months. Non-hazardous.

### Application Note

Flow Cytometry (1-2ug/million cells); Immunofluorescence (1-2ug/ml); Western Blot (1-2ug/ml); Immunohistochemistry (Formalin-fixed) (1-2ug/ml for 30 minutes at RT)(Staining of formalin-fixed tissues requires heating tissue sections in 10mM Tris with 1mM EDTA, pH 9.0, for 45 min at 95&degC followed by cooling at RT for 20 minutes);

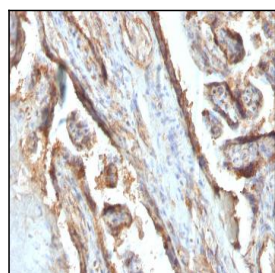


Fig. 1: Formalin-fixed, paraffin-embedded human Placenta stained with Galectin-13 Monoclonal Antibody (PP13/1161).

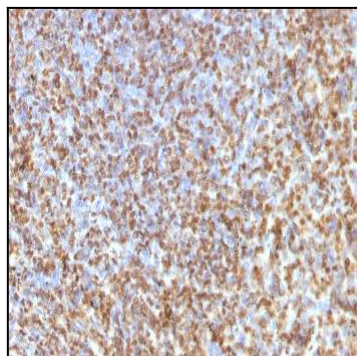


Fig. 2: Formalin-fixed, paraffin-embedded human Spleen stained with Galectin-13 Monoclonal Antibody (PP13/1161).

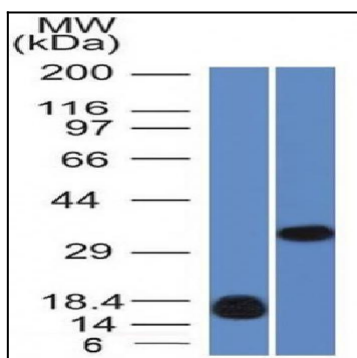


Fig. 3: Western Blot of (A) Recombinant human Galectin-13 fragment And (B) K562 cell lysate using Galectin-13 Monoclonal Antibody (PP13/1161).

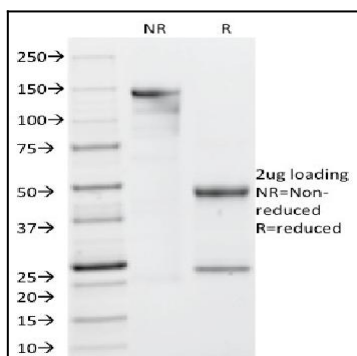


Fig. 4: SDS-PAGE Analysis Purified Galectin-13 MAb (PP13/1161). Confirmation of Purity and Integrity of Antibody.