

36-2408: Anti-GP2 (Glycoprotein 2) / ZAP75 Monoclonal Antibody(Clone: GP2/1551)(Discontinued)

Clonality :	Monoclonal
Clone Name :	GP2/1551
Application :	ELISA
Reactivity :	Human
Gene :	GP2
Gene ID :	2813
Uniprot ID :	P55259
Alternative Name :	Glycoprotein 2 (zymogen granule membrane); GP2; Pancreatic zymogen granule membrane associated protein GP2; Pancreatic zymogen granule membrane protein GP-2; ZAP75
Isotype :	Mouse IgG2b, kappa
Immunogen Information :	Recombinant human GP2 protein fragment (aa35-179)

Description

GP2 (glycoprotein 2), also known as ZAP75, is a 537 amino acid secreted protein. It is an integral membrane protein that is secreted from intracellular zymogen granules and associates with the plasma membrane via glycosylphosphatidylinositol (GPI) linkage. GP2 is cleaved and then released into the pancreatic duct along with exocrine secretions. GP2 binds pathogens such as enterobacteria, thereby playing an important role in the innate immune response. The C-terminus of this protein is related to the C-terminus of the protein encoded by the neighboring gene, uromodulin (UMOD). GP2 is also expressed on the apical plasma membrane of specialized microfold (M) cells among enterocytes and serves as a transcytotic receptor for mucosal antigens. M cells are considered a promising target for oral vaccination against various infectious diseases.

Product Info

Amount :	20 µg / 100 µg
Content :	200 µg/ml of Ab Purified from Bioreactor Concentrate by Protein A/G. Prepared in 10mM PBS with 0.05% BSA & 0.05% azide. Also available WITHOUT BSA & azide at 1.0mg/ml.
Storage condition :	Antibody with azide - store at 2 to 8°C. Antibody without azide - store at -20 to -80°C. Antibody is stable for 24 months. Non-hazardous.

Application Note

ELISA (For coating, order Ab without BSA); Optimal dilution for a specific application should be determined.

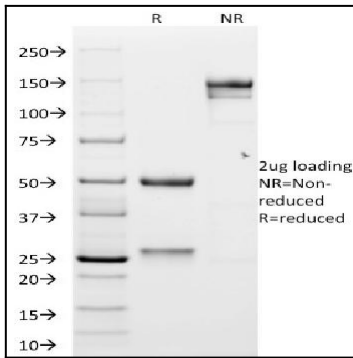


Fig. 1: SDS-PAGE Analysis Purified GP2 Mouse Monoclonal Antibody (GP2/1551). Confirmation of Integrity and Purity of Antibody.