

36-2389: Anti-Connexin 32 (Gap Junction Protein) Monoclonal Antibody(Clone: GJB1/1753)

Clonality :	Monoclonal
Clone Name :	GJB1/1753
Application :	IHC
Reactivity :	Human, Mouse, Rat
Gene :	GJB1
Gene ID :	2705
Uniprot ID :	P08034
Alternative Name :	Charcot Marie Tooth neuropathy X linked; CMTX; CMTX1; Connexin-32; Cx32; GAP junction 28kDa liver protein; Gap junction beta-1 protein; Gap junction protein beta 1 32kD; GJB1
Isotype :	Mouse IgG
Immunogen Information :	Recombinant human GJB1 protein

Description

This Ab recognizes a protein of 27-32kDa, identified as Connexin 32. The connexin family of proteins forms hexameric complexes called 'connexons' that facilitate movement of low molecular weight proteins between cells via gap junctions. Connexin proteins share a common topology of four transmembrane therefore, one connexin usually cannot fully substitute for another.

Product Info

Amount :	20 µg / 100 µg
Content :	200 µg/ml of Ab Purified from Bioreactor Concentrate by Protein G. Prepared in 10mM PBS with 0.05% BSA & 0.05% azide. Also available WITHOUT BSA & azide at 1.0mg/ml.
Storage condition :	Antibody with azide - store at 2 to 8°C. Antibody without azide - store at -20 to -80°C. Antibody is stable for 24 months. Non-hazardous.

Application Note

Immunohistochemistry (Formalin-fixed) (0.1-0.2µg/ml for 30 min at RT)(Staining of formalin-fixed tissues requires heating tissue sections in 10mM Tris with 1mM EDTA, pH 9.0, for 45 min at 95°C followed by cooling at RT for 20 minutes);

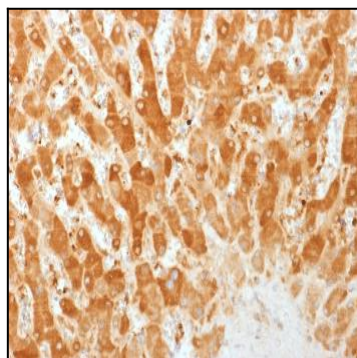


Fig. 1: Formalin-fixed, paraffin-embedded human Liver stained with Connexin 32 Monoclonal Antibody (GJB1/1753)

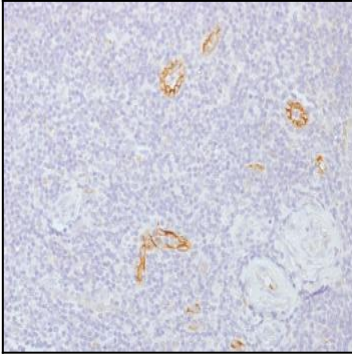


Fig. 2: Formalin-fixed, paraffin-embedded human Tonsil stained with Connexin 32 Monoclonal Antibody (GJB1/1753)