

36-2338: Anti-Alkaline Phosphatase (Placental) / PLAP (Germ Cell Tumor Marker) Monoclonal Antibody(Clone: ALPP/238)

Clonality :	Monoclonal
Clone Name :	ALPP/238
Application :	ELISA
Reactivity :	Human
Gene :	ALPP
Gene ID :	250
Uniprot ID :	P05187
Alternative Name :	Alkaline phosphatase placental type; Alkaline phosphatase Regan Isozyme; ALP; Alp1; ALPP; Germ-cell alkaline phosphatase; nagao Isozyme; PALP; Placental alkaline phosphatase 1; placental heat-stable alkaline phosphatase; PLAP-1; PLAP1
Isotype :	Mouse IgG2a, kappa
Immunogen Information :	Recombinant full-length human ALPP protein

Description

PLAP is a tissue specific, trophoblast-derived, 70kDa, glycosyl-phosphatidylinositol (GPI)-anchored, dimeric, Zn²⁺ metallo glycoprotein that catalyzes the hydrolysis of phosphomonoesters into an inorganic phosphate and an alcohol. It is present in the placenta and serum of pregnant women and in high frequency in gynecological and testicular cancers and in lower frequency in other tumors. The three tissue-specific AP's in humans, PLAP, germ cell AP (GCAP) and intestinal AP, are 90-98% homologous. Non-tissue specific AP is found in kidney, liver and bone. This MAb binds equally well to all common allelic variants (S, F, FS and I) of PLAP as to AP from normal human testis. This MAb can be used both as coating as well as tracer antibody in the same ELISA to detect PLAP in serum of S, F, FS and I phenotypes.

Product Info

Amount :	20 µg / 100 µg
Content :	200 µg/ml of Ab Purified from Bioreactor Concentrate by Protein A/G. Prepared in 10mM PBS with 0.05% BSA & 0.05% azide. Also available WITHOUT BSA & azide at 1.0mg/ml.
Storage condition :	Antibody with azide - store at 2 to 8°C. Antibody without azide - store at -20 to -80°C. Antibody is stable for 24 months. Non-hazardous.

Application Note

ELISA (For coating, order antibody without BSA);

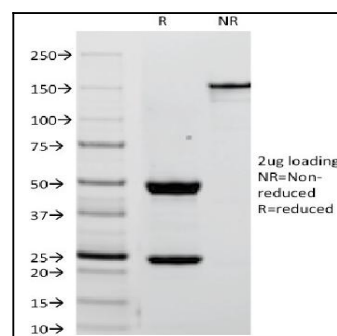


Fig. 1: SDS-PAGE Analysis Purified PLAP Mouse Monoclonal Antibody (ALPP/238). Confirmation of Integrity and Purity of Antibody.