

## 36-2336: Anti-FSH-Receptor (Ovarian Marker) Monoclonal Antibody(Clone: FSHR/1400)

<b>Clonality :</b>	Monoclonal
<b>Clone Name :</b>	FSHR/1400
<b>Application :</b>	IHC
<b>Reactivity :</b>	Human
<b>Gene :</b>	FSHR
<b>Gene ID :</b>	2492
<b>Uniprot ID :</b>	P23945
<b>Alternative Name :</b>	Follicle-stimulating hormone receptor; Follitropin receptor; FSH receptor; FSH-R; FSHRO; LGR1; ODG1; ovarian dysgenesis 1
<b>Isotype :</b>	Mouse IgG1, kappa
<b>Immunogen Information :</b>	Recombinant human FSHR protein

### Description

Follicle-stimulating hormone receptor (FSHR) is a 695 amino acid G protein coupled receptor. FSH binds to the receptor in a hand-clasp fashion via its a condition characterized by the presence of multiple serous and hemorrhagic follicular cysts lined by luteinized cells.

### Product Info

<b>Amount :</b>	20 µg / 100 µg
<b>Content :</b>	200 µg/ml of Ab Purified from Bioreactor Concentrate by Protein A/G. Prepared in 10mM PBS with 0.05% BSA & 0.05% azide. Also available WITHOUT BSA & azide at 1.0mg/ml.
<b>Storage condition :</b>	Antibody with azide - store at 2 to 8°C. Antibody without azide - store at -20 to -80°C. Antibody is stable for 24 months. Non-hazardous.

### Application Note

Immunohistochemistry (Formalin-fixed) (0.1-0.2µg/ml for 30 min at RT)(Staining of formalin-fixed tissues requires heating tissue sections in 10mM Tris with 1mM EDTA, pH 9.0, for 45 min at 95&degC followed by cooling at RT for 20 minutes);

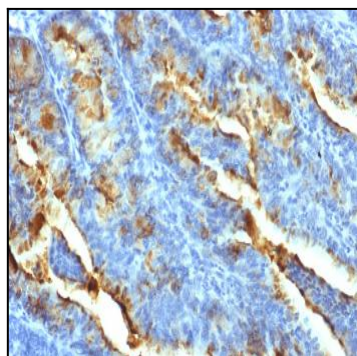


Fig. 1: Formalin-fixed, paraffin-embedded human Uterine Carcinoma stained with FSH Receptor Mouse Monoclonal Antibody (FSHR/1400).

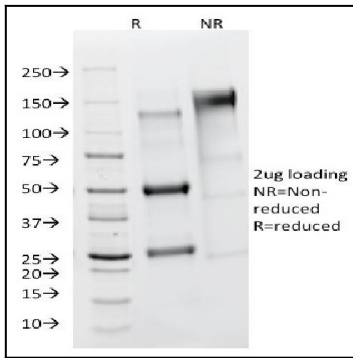


Fig. 2: SDS-PAGE Analysis Purified FSH Receptor Mouse Monoclonal Antibody (FSHR/1400). Confirmation of Purity and Integrity of Antibody.