

## 36-2320: Anti-FOLH1 / PSMA (Prostate Epithelial Marker) Monoclonal Antibody(Clone: FOLH1/3149R)

<b>Clonality :</b>	Monoclonal
<b>Clone Name :</b>	FOLH1/3149R
<b>Application :</b>	IHC
<b>Reactivity :</b>	Human
<b>Gene :</b>	FOLH1
<b>Gene ID :</b>	2346
<b>Uniprot ID :</b>	Q04609
<b>Alternative Name :</b>	Cell growth-inhibiting gene 27 protein (GIG27); Folate hydrolase 1 (FOLH1); Folylpoly-gamma-glutamate carboxypeptidase (FGCP); Glutamate carboxylase II (GCPII); Glutamate carboxypeptidase II Membrane glutamate carboxypeptidase N-acetylated-alpha-linked acidic dipeptidase I (NAALAD1 or NAALADase); Prostate-specific membrane antigen (PSM or PSMA); Pteroylpoly-gamma-glutamate carboxypeptidase
<b>Isotype :</b>	Rabbit IgG
<b>Immunogen Information :</b>	Recombinant human FOLH1 protein fragment (around aa 232-433) (exact sequence is proprietary)

### Description

Folate hydrolase 1 (FOLH1), also known as Prostate-specific membrane antigen (PSMA), is a type II transmembrane glycoprotein belonging to the M28 peptidase family. FOLH1 has two enzymatic activities, one as a prostate-specific integral membrane folate hydrolase and the other as a carboxypeptidase. In the prostate the protein is up-regulated in cancerous cells and is used as an effective diagnostic and prognostic indicator of prostate cancer.

### Product Info

<b>Amount :</b>	20 µg / 100 µg
<b>Content :</b>	200 µg/ml of Ab Purified from Bioreactor Concentrate by Protein A/G. Prepared in 10mM PBS with 0.05% BSA & 0.05% azide. Also available WITHOUT BSA & azide at 1.0mg/ml.
<b>Storage condition :</b>	Antibody with azide - store at 2 to 8°C. Antibody without azide - store at -20 to -80°C. Antibody is stable for 24 months. Non-hazardous.

### Application Note

Immunohistochemistry (Formalin-fixed) (1-2ug/ml for 30 minutes at RT)(Staining of formalin-fixed tissues requires heating tissue sections in 10mM Tris with 1mM EDTA, pH 9.0, for 45 min at 95&degC followed by cooling at RT for 20 minutes);

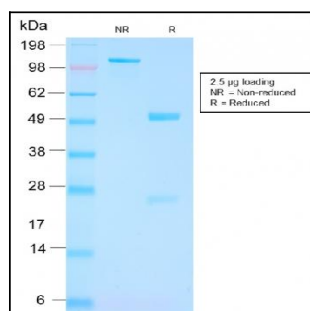


Fig. 1: SDS-PAGE Analysis Purified FOLH1 Rabbit Recombinant Monoclonal Antibody (FOLH1/3149R). Confirmation of Purity and Integrity of Antibody.

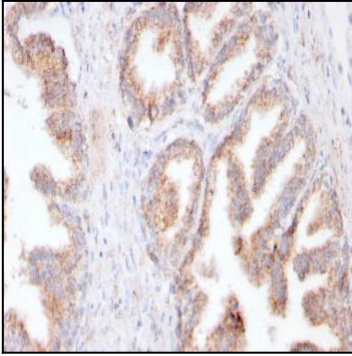


Fig. 2: Formalin-fixed, paraffin-embedded human Prostate Carcinoma stained with FOLH1 Rabbit Recombinant Monoclonal Antibody (FOLH1/3149R).