

## 36-2300: Anti-MART-1 / Melan-A / MLANA (Melanoma Marker) Monoclonal Antibody(Clone: MLANA/1409R)

<b>Clonality :</b>	Monoclonal
<b>Clone Name :</b>	MLANA/1409R
<b>Application :</b>	WB,IHC
<b>Reactivity :</b>	Human, Mouse, Rat
<b>Gene :</b>	MLANA
<b>Gene ID :</b>	2315
<b>Uniprot ID :</b>	Q16655
<b>Alternative Name :</b>	Antigen LB39-AA, Antigen SK29-AA, Melanoma antigen recognized by T-cells 1, MLAN-A, MLANA
<b>Isotype :</b>	Rabbit IgG
<b>Immunogen Information :</b>	Recombinant full-length hMART-1 protein

### Description

This antibody recognizes a protein doublet of 20-22kDa, identified as MART-1 (Melanoma Antigen Recognized by T cells 1) or Melan-A. MART-1 is a newly identified melanocyte differentiation antigen recognized by autologous cytotoxic T lymphocytes. Seven other melanoma associated antigens recognized by autologous cytotoxic T cells include MAGE-1, MAGE-3, tyrosinase, gp100, gp75, BAGE-1, and GAGE-1. Subcellular fractionation shows that MART-1 is present in melanosomes and endoplasmic reticulum. This MAb labels melanomas and other tumors showing melanocytic differentiation. It is also a useful positive-marker for angiomyolipomas. It does not stain tumor cells of epithelial, lymphoid, glial, or mesenchymal origin.

### Product Info

<b>Amount :</b>	20 µg / 100 µg
<b>Content :</b>	200 µg/ml of Ab Purified from Bioreactor Concentrate by Protein A/G. Prepared in 10mM PBS with 0.05% BSA & 0.05% azide. Also available WITHOUT BSA & azide at 1.0mg/ml.
<b>Storage condition :</b>	Antibody with azide - store at 2 to 8°C. Antibody without azide - store at -20 to -80°C. Antibody is stable for 24 months. Non-hazardous.

### Application Note

Western Blot (2-4ug/ml); Immunohistochemistry (Formalin-fixed) (1-2ug/ml for 30 minutes at RT)(Staining of formalin-fixed tissues requires heating tissue sections in 10mM Tris with 1mM EDTA, pH 9.0, for 45 min at 95°C followed by cooling at RT for 20 minutes);

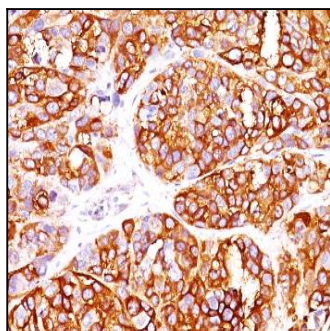


Fig. 1: Formalin-fixed, paraffin-embedded human Melanoma stained with MART-1 Rabbit Recombinant Monoclonal Antibody (MLANA/1409R).

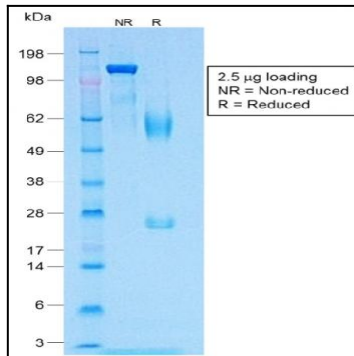


Fig. 2: SDS-PAGE Analysis of Purified MART-1 Rabbit Recombinant Monoclonal Antibody (MLANA/1409R).