

36-2282: Anti-CD32 (Fc Gamma RIIa) Monoclonal Antibody(Clone: 8.7)

Clonality :	Monoclonal
Clone Name :	8.7
Application :	Functional Assay,IF,FACS
Reactivity :	Human
Gene :	FCGR2A
Gene ID :	2212
Uniprot ID :	P12318
Alternative Name :	CD32A; Fc fragment of IgG low affinity Ila receptor; Fc gamma RIIa; Fc-gamma RII-a; Fc-gamma-RIIa; FCGR2A; FcgRII; Fcr-2; FcRII-a; IGFR2; IgG Fc receptor II-a; Low affinity immunoglobulin gamma Fc region receptor II-a; Ly-17; Ly-m20; LyM-1; Lymphocyte antigen 17
Isotype :	Mouse IgG1, kappa
Immunogen Information :	K562 and FcgRII+L cells

Description

This MAb reacts with a CD32 (FcgRII) epitope distinct from that defined by MAb 8.26 and the epitope overlaps with that of MAb 7.30 (cluster 4). It displays a stronger reaction with Daudi than with U937 cells. The epitope is located in domain 2 of FcgRIIa. Its Fab'2 fragments block immune complex binding. CD32 (FcgRII) is a type 1 transmembrane glycoprotein that mediates several functions including phagocytosis, cytotoxicity, and immunomodulation as well as platelet aggregation. Three genes (A, B, and C) encode CD32 and at least 6 isoforms are generated via alternative mRNA splicing, i.e., IIa1, IIa2, IIb1, IIb2, IIb3 and IIc. Monocytes/macrophages, placental trophoblasts and endothelial cells express all isoforms. In addition, the IIb isoform is expressed by B cells, and the IIa isoform by platelets, granulocytes and, weakly, by B cells. NK cells and neutrophils express Isoform IIc. CD32 binds weakly to the Fc region of monomeric IgG but more strongly to IgG aggregates and immune complexes.

Product Info

Amount :	20 µg / 100 µg
Content :	200 µg/ml of Ab Purified from Bioreactor Concentrate by Protein A/G. Prepared in 10mM PBS with 0.05% BSA & 0.05% azide. Also available WITHOUT BSA & azide at 1.0mg/ml.
Storage condition :	Antibody with azide - store at 2 to 8°C. Antibody without azide - store at -20 to -80°C. Antibody is stable for 24 months. Non-hazardous.

Application Note

Functional Studies (Order Ab without BSA & Azide)Flow Cytometry (1-2ug/million cells); Immunofluorescence (1-2ug/ml);

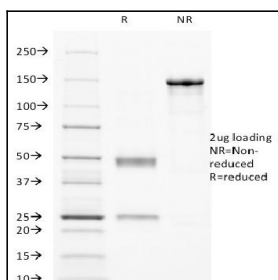


Fig. 1: SDS-PAGE Analysis Purified CD32 Mouse Monoclonal Antibody (8.7). Confirmation of Purity and Integrity of Antibody.