

36-2265: Anti-Albumin (Transport Protein) Monoclonal Antibody(Clone: ALB/2356)

Clonality :	Monoclonal
Clone Name :	ALB/2356
Application :	ELISA,FACS,IF,WB
Reactivity :	Human
Gene :	ALB
Gene ID :	213
Uniprot ID :	P02768
Alternative Name :	ALB; Albumin (32 AA); Albumin (AA 34;); Albumin; Cell growth inhibiting protein 42; Growth inhibiting protein 20; HAS; Serum albumin
Isotype :	Mouse IgG2a, kappa
Immunogen Information :	Recombinant full-length human ALB protein

Description

This MAb is Monospecific to albumin and shows no significant cross-reaction with other human proteins. Albumin is a soluble, monomeric protein, which comprises about one half of the blood serum protein. Albumin functions primarily as a carrier protein for steroids, fatty acids, and thyroid hormones and plays a role in stabilizing extracellular fluid volume. Albumin is synthesized in the liver as preproalbumin, which has an N-terminal peptide that is removed before the nascent protein is released from the rough endoplasmic reticulum. The product, proalbumin, is in turn cleaved in the Golgi vesicles to produce the secreted form of albumin.

Product Info

Amount :	20 µg / 100 µg
Content :	200 µg/ml of Ab Purified from Bioreactor Concentrate by Protein A/G. Prepared in 10mM PBS with 0.05% BSA & 0.05% azide. Also available WITHOUT BSA & azide at 1.0mg/ml.
Storage condition :	Antibody with azide - store at 2 to 8°C. Antibody without azide - store at -20 to -80°C. Antibody is stable for 24 months. Non-hazardous.

Application Note

ELISA (For coating, order Ab without BSA);,Flow Cytometry (1-2ug/million cells);,Immunofluorescence (2-4ug/ml); Western Blot (1-2ug/ml),

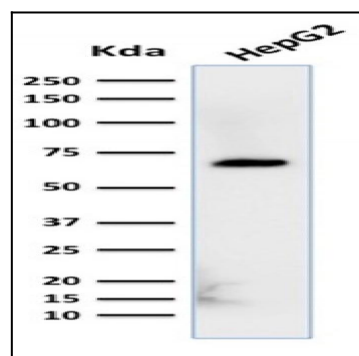


Fig. 1: Western Blot Analysis of HepG2 cell lysate using Albumin Monospecific Mouse Monoclonal Antibody (ALB/2356).

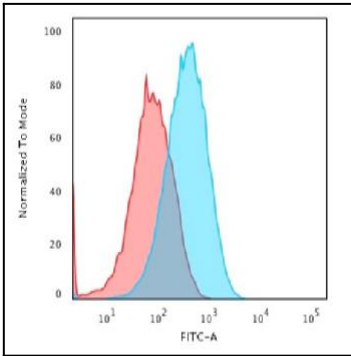


Fig. 2: Flow Cytometric Analysis of paraformaldehyde-fixed HepG2 cells using Albumin Monospecific Mouse Monoclonal Antibody (ALB/2356) followed by goat anti-Mouse IgG-CF488 (Blue); Isotype Control (Red).

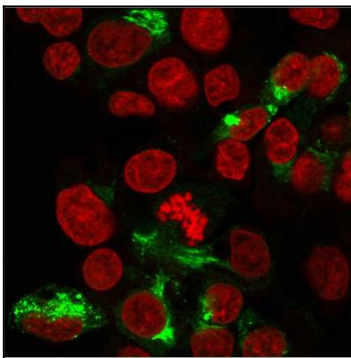


Fig. 3: Immunofluorescent staining of paraformaldehyde-fixed HepG2 cells with Albumin Monospecific Mouse Monoclonal Antibody (ALB/2356) followed by goat anti-Mouse IgG-CF488 (Green). Nuclei are labelled with Reddot (Red).

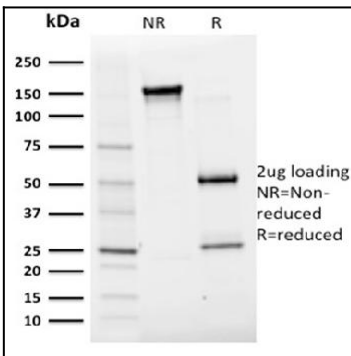


Fig. 4: SDS-PAGE Analysis Purified Albumin Monospecific Mouse Monoclonal Antibody (ALB/2356). Confirmation of Purity and Integrity of Antibody.

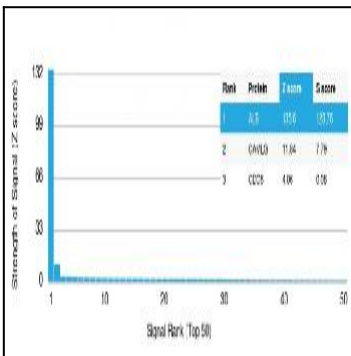


Fig. 5: Analysis of Protein Array containing more than 19,000 full-length human proteins using Albumin Monospecific Mouse Monoclonal Antibody (ALB/2356). Z- and S- Score: The Z-score represents the strength of a signal that a monoclonal antibody (MAB) (in combination with a fluorescently-tagged anti-IgG secondary antibody) produces when binding to a particular protein on the HuProt™ array. Z-scores are described in units of standard deviations (SD's) above the mean value of all signals generated on that array. If targets on HuProt™ are arranged in descending order of the Z-score, the S-score is the difference (also in units of SD's) between the Z-score. S-score therefore represents the relative target specificity of a MAB to its intended target. A MAB is considered to be specific to its intended target, if the MAB has an S-score of at least 2.5. For example, if a MAB binds to protein X with a Z-score of 43 and to protein Y with a Z-score of 14, then the S-score for the binding of that MAB to protein X is equal to 29.