

36-2236: Anti-HER-2 / c-erbB-2 / neu / CD340 Monoclonal Antibody(Clone: HRB2/273)

Clonality :	Monoclonal
Clone Name :	HRB2/273
Application :	ELISA,FACS,IF
Reactivity :	Human
Gene :	ERBB2
Gene ID :	2064
Uniprot ID :	P04626
Alternative Name :	p185, CD340, Verb b2 Erythroblastic Leukemia Viral Oncogene Homolog 2, Neuro/Glioblastoma Derived Oncogene Homolog
Isotype :	Mouse IgG1, kappa
Immunogen Information :	Recombinant extracellular domain of human HER-2 protein

Description

This MAb is specific to c-erbB-2/HER-2 and shows minimal cross-reaction with other members of the family. C-erbB-2/HER-2 is a member of the EGFR family. Receptors of this family are located on the plasma membrane and consist of an extracellular ligand-binding domain that is connected to a large intracellular domain by a single transmembrane sequence. c-erbB-2/HER-2 protein is over-expressed in a variety of carcinomas especially those of breast and ovary.

Product Info

Amount :	20 µg / 100 µg
Content :	200 µg/ml of Ab Purified from Bioreactor Concentrate by Protein A/G. Prepared in 10mM PBS with 0.05% BSA & 0.05% azide. Also available WITHOUT BSA & azide at 1.0mg/ml.
Storage condition :	Antibody with azide - store at 2 to 8°C. Antibody without azide - store at -20 to -80°C. Antibody is stable for 24 months. Non-hazardous.

Application Note

ELISA (For coating, order antibody without BSA); Flow Cytometry (1-2ug/million cells); Immunofluorescence (1-2ug/ml);

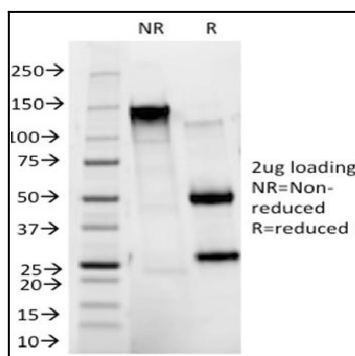


Fig. 1: SDS-PAGE Analysis Purified HER-2 Mouse Monoclonal Antibody (HRB2/273). Confirmation of Integrity and Purity of Antibody.

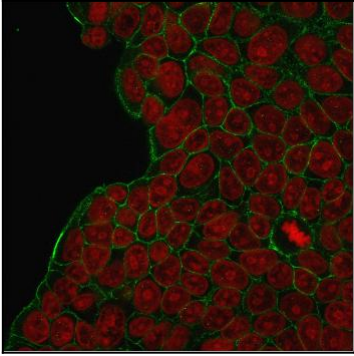


Fig. 2: Immunofluorescent staining of MCF-7 cells with HER-2 Mouse Monoclonal Antibody (HRB2/273) followed by goat anti-Mouse IgG-CF488 (Green). Nuclei are stained with Reddot (Red).