

36-2224: Anti-HER-2 / c-erbB-2 / neu / CD340 Monoclonal Antibody(Clone: SPM172)

Clonality :	Monoclonal
Clone Name :	SPM172
Application :	IHC
Reactivity :	Human
Gene :	ERBB2
Gene ID :	2064
Uniprot ID :	P04626
Alternative Name :	p185, CD340, Verb b2 Erythroblastic Leukemia Viral Oncogene Homolog 2, Neuro/Glioblastoma Derived Oncogene Homolog
Isotype :	Mouse IgG, kappa
Immunogen Information :	Recombinant human HER-2 protein fragment (around aa 311-462) (exact sequence is proprietary)

Description

Recognizes a protein of 185kDa, which is identified as c-erbB-2/HER-2/neu. Its epitope is localized in the extracellular domain. C-erbB-2/HER-2 is a member of the EGFR family. This MAb is specific and shows minimal cross-reaction with other members of the EGFR-family. Receptors of this family are located on the plasma membrane and consist of an extracellular ligand-binding domain that is connected to a large intracellular domain by a single transmembrane sequence. c-erbB-2/HER-2 protein is over-expressed in a variety of carcinomas especially those of breast and ovary.

Product Info

Amount :	20 µg / 100 µg
Content :	200 µg/ml of Ab Purified from Bioreactor Concentrate by Protein A/G. Prepared in 10mM PBS with 0.05% BSA & 0.05% azide. Also available WITHOUT BSA & azide at 1.0mg/ml.
Storage condition :	Antibody with azide - store at 2 to 8°C. Antibody without azide - store at -20 to -80°C. Antibody is stable for 24 months. Non-hazardous.

Application Note

Immunohistochemistry (Formalin-fixed) (1-2ug/ml for 30 min at RT)(Staining of formalin-fixed tissues requires heating tissue sections in 10mM Tris with 1mM EDTA, pH 9.0, for 45 min at 95°C followed by cooling at RT for 20 minutes);

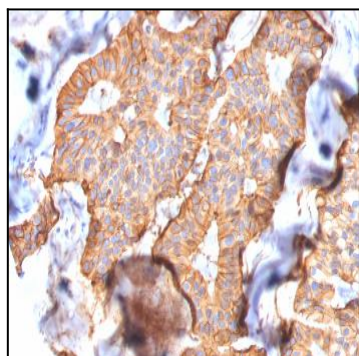


Fig. 1: Formalin-fixed, paraffin-embedded human Breast Carcinoma stained with HER-2 Mouse Monoclonal Antibody (SPM172).

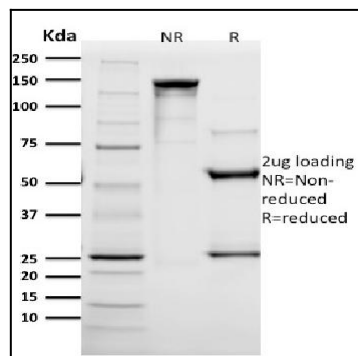


Fig. 2: SDS-PAGE Analysis Purified HER-2 Mouse Monoclonal Antibody (SPM172). Confirmation of Integrity and Purity of Antibody.