

36-2222: Anti-Erythropoietin (EPO) (Marker of Placentation Disorders) Monoclonal Antibody(Clone: EPO/3793R)

Clonality :	Monoclonal
Clone Name :	EPO/3793R
Application :	ELISA,IHC
Reactivity :	Human
Gene :	EPO
Gene ID :	2056
Uniprot ID :	P01588
Alternative Name :	EP; EPO alpha; EPO; Epoetin; Erythropoietin; MVCD2
Isotype :	Rabbit IgG
Immunogen Information :	Recombinant fragment (around aa 28-162) of human EPO protein (exact sequence is proprietary)

Description

Recognizes a protein of about 37kDa, which is identified as Erythropoietin (EPO). Erythropoietin is a secreted, glycosylated cytokine hormone composed of four alpha helical bundles. It is the primary factor responsible for regulating erythropoiesis during steady-state conditions and in response to blood loss and hemorrhage in the adult organism. Erythropoietin is synthesized by the kidney and stimulates the proliferation and maturation of bone marrow erythroid precursor cells. The protein is found in the plasma and regulates red cell production by promoting erythroid differentiation and initiating hemoglobin synthesis.

Product Info

Amount :	20 µg / 100 µg
Content :	200 µg/ml of Ab Purified from Bioreactor Concentrate by Protein A/G. Prepared in 10mM PBS with 0.05% BSA & 0.05% azide. Also available WITHOUT BSA & azide at 1.0mg/ml.
Storage condition :	Antibody with azide - store at 2 to 8°C. Antibody without azide - store at -20 to -80°C. Antibody is stable for 24 months. Non-hazardous.

Application Note

ELISA (Use Ab at 2-4ug/ml for coating) (Order Ab without BSA); ,Immunohistochemistry (Formalin-fixed) (2-4ug/ml for 30 min at RT),(Staining of formalin-fixed tissues requires heating tissue sections in 10mM Tris with 1mM EDTA, pH 9.0, for 45 min at 95°C followed by cooling at RT for 20 minutes);

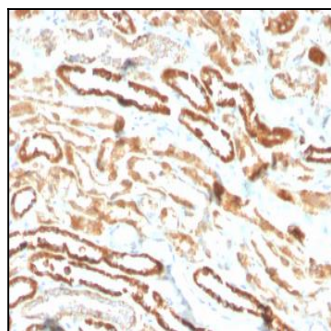


Fig. 1: Formalin-fixed, paraffin-embedded human kidney stained with Erythropoietin Recombinant Rabbit Monoclonal Antibody (EPO/3793R).