

36-2209: Anti-Elastin (ELN) (Marker of Arterial Stiffness and Atherosclerosis) Monoclonal Antibody(Clone: ELN/3131R)

Clonality :	Monoclonal
Clone Name :	ELN/3131R
Application :	IHC
Reactivity :	Human
Gene :	ELN
Gene ID :	2006
Uniprot ID :	P15502
Alternative Name :	Elastin; ELN; SVAS; Tropoelastin; WBS; WS
Isotype :	Rabbit IgG
Immunogen Information :	Recombinant full-length human Elastin protein

Description

Elastin is a polymeric protein and is the main component of the extracellular matrix of arteries. It is synthesized and secreted as a soluble, single-chain protein (tropoelastin), which undergoes a number of post-translational modifications prior to its organization into an elastic fiber in the extracellular space. Elastin performs a regulatory function during arterial development by controlling proliferation of smooth muscle and stabilizing arterial structure. It imparts elasticity to the connective tissue. During aging, the elasticity of connective tissue is reduced because of the cross-linking of collagenous fibers with elastin. The abnormal accumulation of elastic tissue in blood vessels is found in atherosclerosis and hypertension.

Product Info

Amount :	20 µg / 100 µg
Content :	200 µg/ml of Ab Purified from Bioreactor Concentrate by Protein A/G. Prepared in 10mM PBS with 0.05% BSA & 0.05% azide. Also available WITHOUT BSA & azide at 1.0mg/ml.
Storage condition :	Antibody with azide - store at 2 to 8°C. Antibody without azide - store at -20 to -80°C. Antibody is stable for 24 months. Non-hazardous.

Application Note

Immunohistochemistry (Formalin-fixed) (1-2µg/ml for 30 min at RT)(Staining of formalin-fixed tissues requires heating tissue sections in 10mM Tris with 1mM EDTA, pH 9.0, for 45 min at 95°C followed by cooling at RT for 20 minutes);

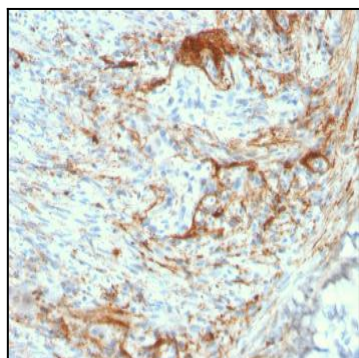


Fig. 1: Formalin-fixed, paraffin-embedded human Small Intestine stained with Rabbit Recombinant Monoclonal Antibody (ELN/3131R) to Elastin.

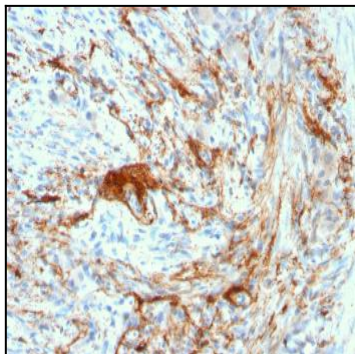


Fig. 2: Formalin-fixed, paraffin-embedded human Small Intestine stained with Rabbit Recombinant Monoclonal Antibody (ELN/3131R) to Elastin.

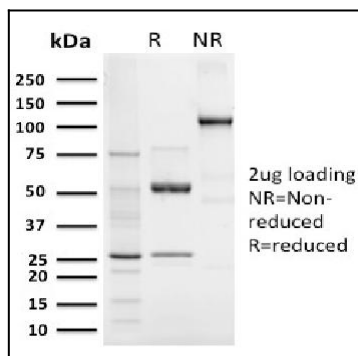


Fig. 3: SDS-PAGE Analysis Purified Elastin Recombinant Rabbit Monoclonal Antibody (ELN/3131R). Confirmation of Purity and Integrity of Antibody.