

36-2203: Anti-EGFR (Epidermal Growth Factor Receptor) Monoclonal Antibody(Clone: GFR/1708)

| | |
|--------------------------------|--|
| Clonality : | Monoclonal |
| Clone Name : | GFR/1708 |
| Application : | WB,IHC |
| Reactivity : | Human |
| Gene : | EGFR |
| Gene ID : | 1956 |
| Uniprot ID : | P00533 |
| Alternative Name : | ErbB1; ERBB1; Errp; HER1; mENA; PIG61; Proto-oncogene c-ErbB-1; Receptor Tyrosine Protein Kinase; ErbB1; Urogastrone; wa2; Wa5 |
| Isotype : | Mouse IgG1, kappa |
| Immunogen Information : | Recombinant full-length human EGFR protein |

Description

This MAbs recognizes a protein of 170kDa, identified as EGFR. EGFR is type I receptor tyrosine kinase with sequence homology to erbB-1, -2, -3 -4 or HER-1, -2, -3 -4. It binds to Epidermal Growth Factor (EGF), Transforming Growth Factor- α (TGF- α), Heparin-binding EGF (HB-EGF), amphiregulin, betacellulin and epiregulin. EGFR is overexpressed in tumors of breast, brain, bladder, lung, gastric, head neck, esophagus, cervix, vulva, ovary, and endometrium. It is predominantly present in squamous cell carcinomas.

Product Info

| | |
|----------------------------|--|
| Amount : | 20 μ g / 100 μ g |
| Content : | 200 μ g/ml of Ab Purified from Bioreactor Concentrate by Protein A/G. Prepared in 10mM PBS with 0.05% BSA & 0.05% azide. Also available WITHOUT BSA & azide at 1mg/ml. |
| Storage condition : | Antibody with azide - store at 2 to 8°C. Antibody without azide - store at -20 to -80°C. Antibody is stable for 24 months. Non-hazardous. |

Application Note

Western Blot (1-2 μ g/ml); Immunohistochemistry (Formalin-fixed) (0.1-0.2 μ g/ml for 30 min at RT)(Staining of formalin-fixed tissues requires heating tissue sections in 10mM Tris with 1mM EDTA, pH 9.0, for 45 min at 95°C followed by cooling at RT for 20 minutes);

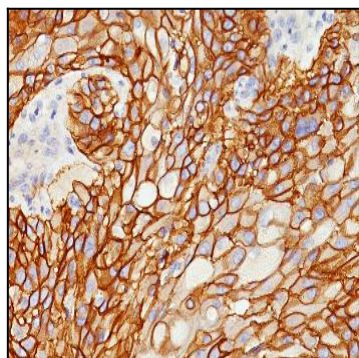


Fig. 1: Formalin-fixed, paraffin-embedded human Lung SCC stained with EGFR Mouse Monoclonal Antibody (GFR/1708).

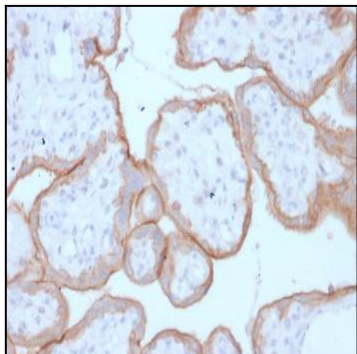


Fig. 2: Formalin-fixed, paraffin-embedded human Placenta stained with EGFR Mouse Monoclonal Antibody (GFR/1708).

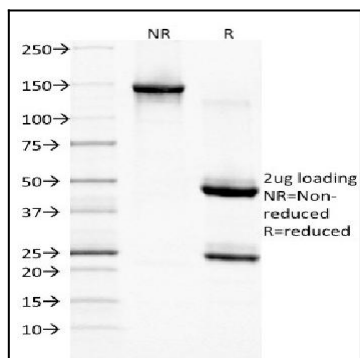


Fig. 3: SDS-PAGE Analysis Purified EGFR Mouse Monoclonal Antibody (GFR/1708). Confirmation of Integrity and Purity of Antibody.