

## 36-2202: Anti-EGFR (Epidermal Growth Factor Receptor) Monoclonal Antibody(Clone: GFR/1667)

<b>Clonality :</b>	Monoclonal
<b>Clone Name :</b>	GFR/1667
<b>Application :</b>	WB,IHC
<b>Reactivity :</b>	Human
<b>Gene :</b>	EGFR
<b>Gene ID :</b>	1956
<b>Uniprot ID :</b>	P00533
<b>Alternative Name :</b>	ErbB1; ERBB1; Errp; HER1; mENA; PIG61; Proto-oncogene c-ErbB-1; Receptor Tyrosine Protein Kinase; ErbB1; Urogastrone; wa2; Wa5
<b>Isotype :</b>	Mouse IgG1, kappa
<b>Immunogen Information :</b>	Recombinant full-length human EGFR protein

### Description

This MAbs recognizes a protein of 170kDa, identified as EGFR. EGFR is type I receptor tyrosine kinase with sequence homology to erbB-1, -2, -3 -4 or HER-1, -2, -3 -4. It binds to Epidermal Growth Factor (EGF), Transforming Growth Factor- $\alpha$  (TGF- $\alpha$ ), Heparin-binding EGF (HB-EGF), amphiregulin, betacellulin and epiregulin. EGFR is overexpressed in tumors of breast, brain, bladder, lung, gastric, head neck, esophagus, cervix, vulva, ovary, and endometrium. It is predominantly present in squamous cell carcinomas.

### Product Info

<b>Amount :</b>	20 $\mu$ g / 100 $\mu$ g
<b>Content :</b>	200 $\mu$ g/ml of Ab Purified from Bioreactor Concentrate by Protein A/G. Prepared in 10mM PBS with 0.05% BSA & 0.05% azide. Also available WITHOUT BSA & azide at 1mg/ml.
<b>Storage condition :</b>	Antibody with azide - store at 2 to 8°C. Antibody without azide - store at -20 to -80°C. Antibody is stable for 24 months. Non-hazardous.

### Application Note

Western Blot (0.5-1.0  $\mu$ g/ml for 2 hours at RT); Immunohistochemistry (Formalin-fixed) (1-2 $\mu$ g/ml for 30 minutes at RT)(Staining of formalin-fixed tissues requires heating tissue sections in 10mM Tris with 1mM EDTA, pH 9.0, for 45 min at 95 $\pm$ degC followed by cooling at RT for 20 minutes);

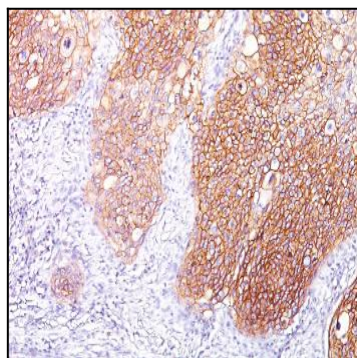


Fig. 1: Formalin-fixed, paraffin-embedded human Lung SqCC stained with EGFR Mouse Monoclonal Antibody (GFR/1667).

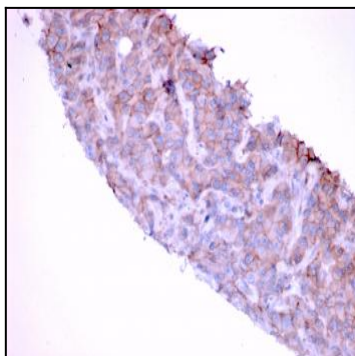


Fig. 2: Formalin-fixed, paraffin-embedded human Bladder stained with EGFR Mouse Monoclonal Antibody (GFR/1667).

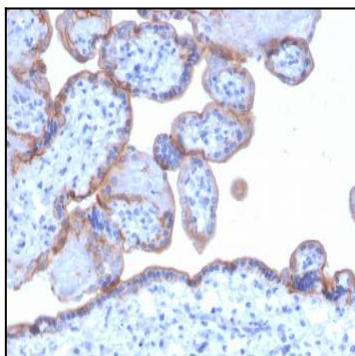


Fig. 3: Formalin-fixed, paraffin-embedded human Placenta stained with EGFR Mouse Monoclonal Antibody (GFR/1667).

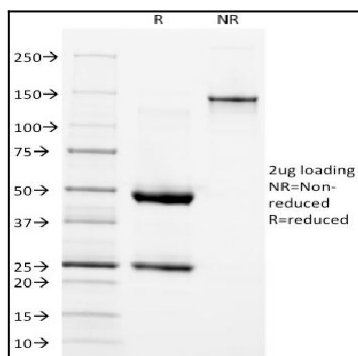


Fig. 4: SDS-PAGE Analysis Purified EGFR Mouse Monoclonal Antibody (GFR/1667). Confirmation of Integrity and Purity of Antibody.