

36-2196: Anti-EGFR (Epidermal Growth Factor Receptor) Monoclonal Antibody(Clone: GFR/2341)

Clonality :	Monoclonal
Clone Name :	GFR/2341
Application :	WB,IHC
Reactivity :	Human
Gene :	EGFR
Gene ID :	1956
Uniprot ID :	P00533
Alternative Name :	ErbB1; ERBB1; Errp; HER1; mENA; PIG61; Proto-oncogene c-ErbB-1; Receptor Tyrosine Protein Kinase; ErbB1; Urogastrone; wa2; Wa5
Isotype :	Mouse IgG2b, kappa
Immunogen Information :	Recombinant fragment of human EGFR protein (around aa 344-492) (exact sequence is proprietary)

Description

This MAbs recognizes a protein of 170kDa, identified as EGFR. EGFR is type I receptor tyrosine kinase with sequence homology to erbB-1, -2, -3 -4 or HER-1, -2, -3 -4. It binds to Epidermal Growth Factor (EGF), Transforming Growth Factor- α (TGF- α), Heparin-binding EGF (HB-EGF), amphiregulin, betacellulin and epiregulin. EGFR is overexpressed in tumors of breast, brain, bladder, lung, gastric, head neck, esophagus, cervix, vulva, ovary, and endometrium. It is predominantly present in squamous cell carcinomas.

Product Info

Amount :	20 μ g / 100 μ g
Content :	200 μ g/ml of Ab Purified from Bioreactor Concentrate by Protein A/G. Prepared in 10mM PBS with 0.05% BSA & 0.05% azide. Also available WITHOUT BSA & azide at 1mg/ml.
Storage condition :	Antibody with azide - store at 2 to 8°C. Antibody without azide - store at -20 to -80°C. Antibody is stable for 24 months. Non-hazardous.

Application Note

Western Blot (1-2 μ g/ml); Immunohistochemistry (Formalin-fixed) (1-2 μ g/ml for 30 minutes at RT)(Staining of formalin-fixed tissues requires heating tissue sections in 10mM Tris with 1mM EDTA, pH 9.0, for 45 min at 95°C followed by cooling at RT for 20 minutes);

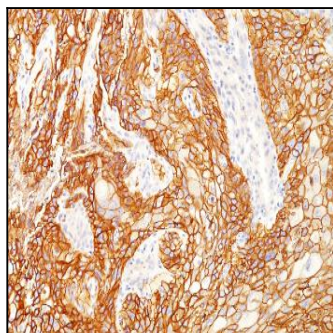


Fig. 1: Formalin-fixed, paraffin-embedded human Lung SqCC stained with EGFR Mouse Monoclonal Antibody (GFR/2341).

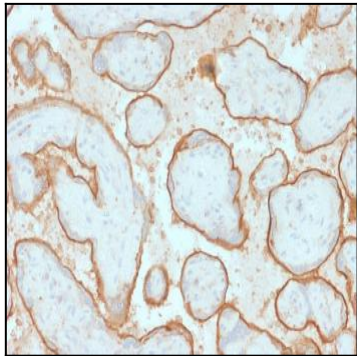


Fig. 2: Formalin-fixed, paraffin-embedded human Placenta stained with EGFR Mouse Monoclonal Antibody (GFR/2341).

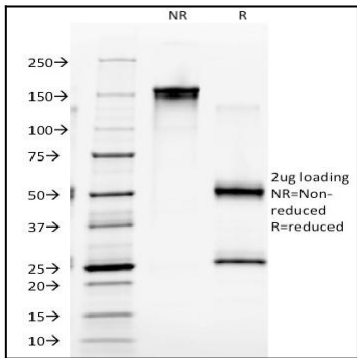


Fig. 3: SDS-PAGE Analysis Purified EGFR Mouse Monoclonal Antibody (GFR/2341). Confirmation of Integrity and Purity of Antibody.

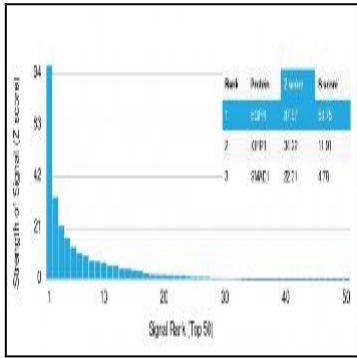


Fig. 4: Analysis of Protein Array containing more than 19,000 full-length human proteins using EGFR Mouse Monoclonal Antibody (GFR/2341) Z- and S- Score: The Z-score represents the strength of a signal that a monoclonal antibody (MAb) (in combination with a fluorescently-tagged anti-IgG secondary antibody) produces when binding to a particular protein on the HuProt™ array. Z-scores are described in units of standard deviations (SD's) above the mean value of all signals generated on that array. If targets on HuProt™ are arranged in descending order of the Z-score, the S-score is the difference (also in units of SD's) between the Z-score. S-score therefore represents the relative target specificity of a MAb to its intended target. A MAb is considered to specific to its intended target, if the MAb has an S-score of at least 2.5. For example, if a MAb binds to protein X with a Z-score of 43 and to protein Y with a Z-score of 14, then the S-score for the binding of that MAb to protein X is equal to 29.