

36-2153: Anti-Cytochrome p450 Monoclonal Antibody(Clone: M12P4H2)

Clonality :	Monoclonal
Clone Name :	M12P4H2
Application :	IHC
Reactivity :	Human
Gene :	CYP2E1
Gene ID :	1571
Uniprot ID :	P05181
Alternative Name :	4-nitrophenol 2-hydroxylase; CPE1; CYP2Ecytochrome P450 2E1; CYP1I1E1; cytochrome P450, family 2, subfamily E, polypeptide 1; cytochrome P450, subfamily IIE (ethanol-inducible), polypeptide 1 ; Cytochrome P450-J; EC 1.14.13; EC 1.14.13.n7; EC 1.14.14.1; flavoprotein-linked monooxygenase; microsomal monooxygenase; P450C2E; P450-J; xenobiotic monooxygenase
Isotype :	Mouse IgG1, kappa
Immunogen Information :	Ovalbumin-conjugated synthetic peptide HIGFGCIPPR (C-terminal sequence)

Description

This gene encodes a member of the cytochrome P450 superfamily of enzymes. The cytochrome P450 proteins are monooxygenases, which catalyze many reactions involved in drug metabolism and synthesis of cholesterol, steroids and other lipids. This protein localizes to the endoplasmic reticulum and is induced by ethanol, the diabetic state, and starvation. The enzyme metabolizes both endogenous substrates, such as ethanol, acetone, and acetal, as well as exogenous substrates including benzene, carbon tetrachloride, ethylene glycol, and nitrosamines, which are pre-mutagens found in cigarette smoke. Due to its many substrates, this enzyme may be involved in such varied processes as gluconeogenesis, hepatic cirrhosis, diabetes, and cancer.

Product Info

Amount :	20 µg / 100 µg
Content :	200 µg/ml of Ab Purified from Bioreactor Concentrate by Protein A/G. Prepared in 10mM PBS with 0.05% BSA & 0.05% azide. Also available WITHOUT BSA & azide at 1mg/ml.
Storage condition :	Antibody with azide - store at 2 to 8°C. Antibody without azide - store at -20 to -80°C. Antibody is stable for 24 months. Non-hazardous.

Application Note

Immunohistochemistry (Formalin-fixed) (0.1-0.2µg/ml for 30 min at RT)(Staining of formalin-fixed tissues requires heating tissue sections in 10mM Tris with 1mM EDTA, pH 9.0, for 45 min at 95°C followed by cooling at RT for 20 minutes);

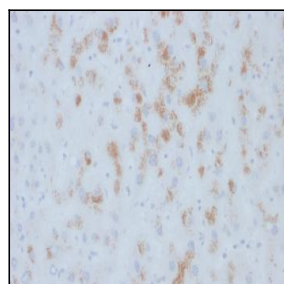


Fig. 1: Formalin-fixed, paraffin-embedded human Hepatic Carcinoma stained with Cytochrome p450 Mouse Monoclonal Antibody (M12P4H2).

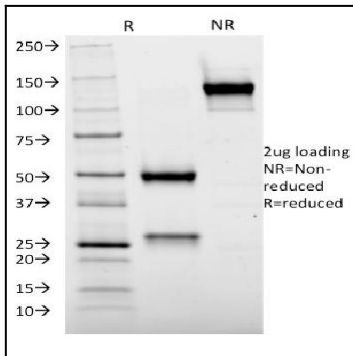


Fig. 2: SDS-PAGE Analysis Purified Cytochrome p450 Mouse Monoclonal Antibody (M12P4H2). Confirmation of Integrity and Purity of Antibody.