

36-2134: Anti-Catenin, beta (p120) Monoclonal Antibody(Clone: 15B8)

Clonality :	Monoclonal
Clone Name :	15B8
Application :	FACS,IF,WB,IHC
Reactivity :	Human, Mouse, Rat
Gene :	CTNNB1
Gene ID :	1499
Uniprot ID :	P35222
Alternative Name :	Cadherin associated protein, beta 1 88kDa, Catenin beta-1, CATNB, CHBCAT, CTNNB1
Isotype :	Mouse IgG1, kappa
Immunogen Information :	Recombinant chicken β -catenin

Description

Beta-catenin associates with the cytoplasmic portion of E-cadherin, which is necessary for the function of E-cadherin as an adhesion molecule. In normal tissues, beta-catenin is localized to the membrane of epithelial cells, consistent with its role in the cell adhesion complex. In breast ductal neoplasia, beta-catenin is usually localized in cellular membranes. However, in lobular neoplasia, a marked redistribution of beta-catenin throughout the cytoplasm results in a diffuse cytoplasmic pattern. Immuno-staining of beta-catenin and E-cadherin helps in the accurate identification of ductal and lobular neoplasms, including a distinction between low-grade ductal carcinoma in situ (DCIS) and lobular carcinoma. Additionally, some rectal and gastric adenocarcinomas demonstrate diffuse cytoplasmic beta-catenin staining and a lack of membranous staining, mimicking the staining pattern observed with lobular breast carcinomas.

Product Info

Amount :	20 μ g / 100 μ g
Content :	200 μ g/ml of Ab Purified from Bioreactor Concentrate by Protein A/G. Prepared in 10mM PBS with 0.05% BSA & 0.05% azide. Also available WITHOUT BSA & azide at 1.0mg/ml.
Storage condition :	Antibody with azide - store at 2 to 8°C. Antibody without azide - store at -20 to -80°C. Antibody is stable for 24 months. Non-hazardous.

Application Note

Flow Cytometry (1-2 μ g/million cells); Immunofluorescence (1-2 μ g/ml); Western Blot (1-2 μ g/ml); Immunohistochemistry (Formalin-fixed) (1-2 μ g/ml for 30 minutes at RT)(Staining of formalin-fixed tissues requires heating tissue sections in 10mM Tris with 1mM EDTA, pH 9.0, for 45 min at 95 $\text{\textcircled{C}}$ followed by cooling at RT for 20 minutes)

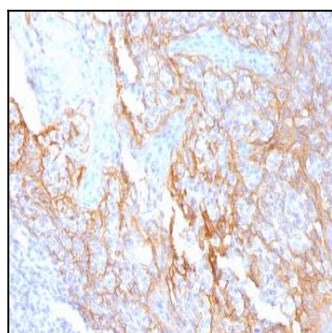


Fig. 1: Formalin-fixed, paraffin-embedded human Tonsil stained with Beta-Catenin Mouse Monoclonal Antibody (15B8).

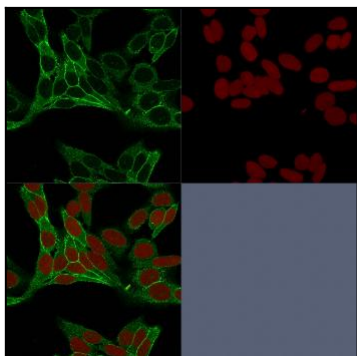


Fig. 2: Confocal immunofluorescence image of HeLa cells using Beta-Catenin Mouse Monoclonal Antibody (15B8) labeled is Green (CF488) and Reddot is used to label the nuclei Red.

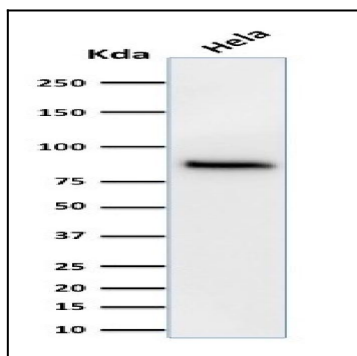


Fig. 3: Western Blot Analysis of HeLa cell lysate using Beta-Catenin Mouse Monoclonal Antibody (15B8).

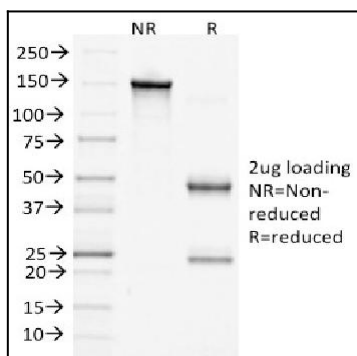


Fig. 4: SDS-PAGE Analysis of Purified Beta-Catenin Mouse Monoclonal Antibody (15B8). Confirmation of Purity and Integrity of Antibody