

## 36-2121: Anti-GM-CSF (Granulocyte/Macrophage - Colony Stimulating Factor) Monoclonal Antibody(Clone: BVD2-21C11)

<b>Clonality :</b>	Monoclonal
<b>Clone Name :</b>	BVD2-21C11
<b>Application :</b>	IP,FACS,IF,WB,IHC
<b>Reactivity :</b>	Human
<b>Gene :</b>	CSF2
<b>Gene ID :</b>	1437
<b>Uniprot ID :</b>	P04141
<b>Alternative Name :</b>	Burst Promoting Activity; Eosinophil Colony Stimulating Factor; Molgramostin; Pluripoietin Alpha; Sargramostim
<b>Isotype :</b>	Rat IgG2a, kappa
<b>Immunogen Information :</b>	Recombinant human GM-CSF protein

### Description

Granulocyte/macrophage - Colony-stimulating factor (GM-CSF) is a hematopoietic factor that is produced by activated T-cells, B-cells, mast cells, macrophages, fibroblasts, and endothelial cells. In addition to supporting colony formation of granulocyte/macrophage progenitors, GM-CSF is a growth factor for erythroid, megakaryocyte, and eosinophil progenitors.

### Product Info

<b>Amount :</b>	20 µg / 100 µg
<b>Content :</b>	200 µg/ml of Ab Purified from Bioreactor Concentrate by Protein A/G. Prepared in 10mM PBS with 0.05% BSA & 0.05% azide. Also available WITHOUT BSA & azide at 1.0mg/ml.
<b>Storage condition :</b>	Antibody with azide - store at 2 to 8°C. Antibody without azide - store at -20 to -80°C. Antibody is stable for 24 months. Non-hazardous.

### Application Note

Neutralization Studies (Order Ab without Azide); Immunoprecipitation (0.5-1ug/500ug protein lysate); Flow Cytometry (1-2ug/million cells); Immunofluorescence (1-2ug/ml); Western Blot (1-2ug/ml); Immunohistochemistry (Frozen) (1-2ug/ml for 30 minutes at RT)

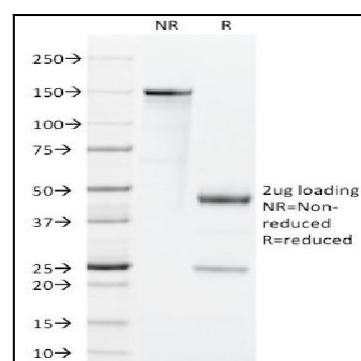


Fig. 1: SDS-PAGE Analysis Purified GM-CSF Rat Monoclonal Antibody (BVD2-21C11). Confirmation of Purity and Integrity of Antibody.