

## 36-2118: Anti-CD21 (Mature B-Cell & Follicular Dendritic Cell Marker) Monoclonal Antibody(Clone: CR2/3124R)

<b>Clonality :</b>	Monoclonal
<b>Clone Name :</b>	CR2/3124R
<b>Application :</b>	FACS,IF,WB,IHC
<b>Reactivity :</b>	Human
<b>Gene :</b>	CR2
<b>Gene ID :</b>	1380
<b>Uniprot ID :</b>	P20023
<b>Alternative Name :</b>	CD21; Complement C3d receptor (C3DR); Complement Receptor type 2 (CR2); CVID7; EBV receptor; EBV-R; Epstein-Barr virus receptor; EVBR; SLEB9
<b>Isotype :</b>	Rabbit IgG
<b>Immunogen Information :</b>	Recombinant fragment (around aa 142-240) of human CR2 (CD21) protein (exact sequence is proprietary)

### Description

Recognizes a protein of 140kDa, which is identified as the complement receptor 2 (CR2) or CD21. This protein is expressed strongly on mature B cells, follicular dendritic cells and weakly on immature thymocytes and T lymphocytes. In B-cell ontogeny, CD21 appears after the pre-B-stage, is maintained during peripheral B-cell development and is lost upon terminal differentiation into plasma cells. CD21 expression is also gradually lost after stimulation of B cells in vitro. CD21 functions as receptor for C3d, C3dg and iC3b Complement components, for EBV and for IFN $\alpha$ . CD21 binds to CD23 and associates with CD19, CD81 and Leu13 to form a large signal-transduction complex involved in B cell activation.

### Product Info

<b>Amount :</b>	20 $\mu$ g / 100 $\mu$ g
<b>Content :</b>	200 $\mu$ g/ml of Ab Purified from Bioreactor Concentrate by Protein A/G. Prepared in 10mM PBS with 0.05% BSA & 0.05% azide. Also available WITHOUT BSA & azide at 1.0mg/ml.
<b>Storage condition :</b>	Antibody with azide - store at 2 to 8°C. Antibody without azide - store at -20 to -80°C. Antibody is stable for 24 months. Non-hazardous.

### Application Note

Flow Cytometry (1-2ug/million cells); Immunofluorescence (1-2ug/ml); Western Blot (1-2ug/ml); ,Immunohistochemistry (Formalin-fixed) (1-2ug/ml for 30 min at RT),(Staining of formalin-fixed tissues requires heating tissue sections in 10mM Tris with 1mM EDTA, pH 9.0, for 45 min at 95&degC followed by cooling at RT for 20 minutes);

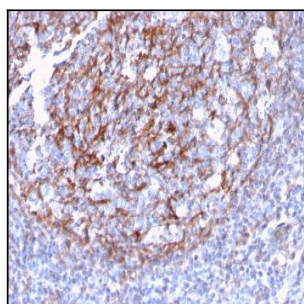


Fig. 1: Formalin-fixed, paraffin-embedded human Tonsil Dendritic stained with CD21 / CR2 Recombinant Rabbit Monoclonal Antibody (CR2/3124R).

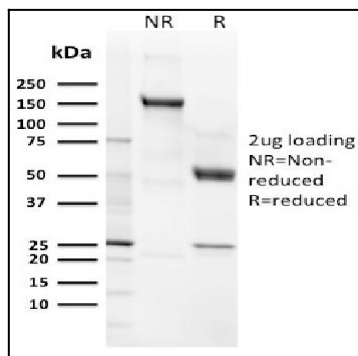


Fig. 2: SDS-PAGE Analysis Purified CD21 / CR2 Recombinant Rabbit Monoclonal Antibody (CR2/3124R). Confirmation of Purity and Integrity of Antibody.

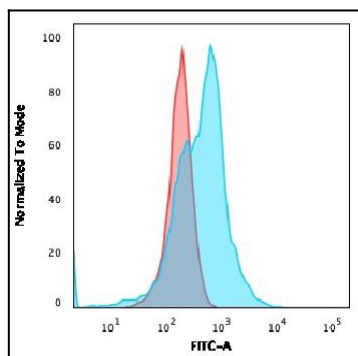


Fig. 3: Flow Cytometric Analysis of PFA-fixed MOLT4 cells. CD21 / CR2 Recombinant Rabbit Monoclonal Antibody (CR2/3124R) followed by Goat anti-rabbit IgG-CF488 (Blue); Isotype Control (Red).

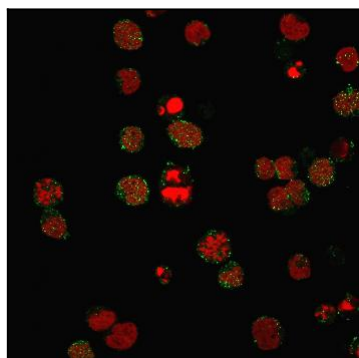


Fig. 4: Immunofluorescence staining of PFA-fixed MOLT4 cells using CD21 / CR2 Recombinant Rabbit Monoclonal Antibody (CR2/3124R) followed by goat anti-Mouse IgG conjugated to CF488 (green). Nuclei are stained with Reddot.