

## 36-2106: Anti-Collagen VII Monoclonal Antibody(Clone: LH7.2)

<b>Clonality :</b>	Monoclonal
<b>Clone Name :</b>	LH7.2
<b>Application :</b>	ELISA,WB,FACS,IF,IHC
<b>Reactivity :</b>	Human
<b>Gene :</b>	COL7A1
<b>Gene ID :</b>	1294
<b>Uniprot ID :</b>	Q02388
<b>Alternative Name :</b>	Alpha 1 type VII collagen; Collagen 7; Collagen alpha 1(VII) chain; Collagen type VII alpha 1; Collagen VII alpha 1 polypeptide Col7a1; EBD1; EBDCT; EBR1; Long-chain (LC) collagen
<b>Isotype :</b>	Mouse IgG1, kappa
<b>Immunogen Information :</b>	Recombinant full-length human Collagen VII protein

### Description

Recognizes an epitope located on collagenase digested Type VII collagen (150kDa), i.e. the non-helical carboxyl terminal region of the dimer. Binding is localized at the inferior border of the lamina densa as demonstrated by immunoelectron microscopy. Type VII is also found in the retina, where its function is unknown. It interacts with Laminin 5 and Fibronectin. Collagen VII is a stratified squamous epithelial basement membrane protein that forms anchoring fibrils which may contribute to epithelial basement membrane organization and adherence by interacting with extracellular matrix (ECM) proteins such as type IV collagen.

### Product Info

<b>Amount :</b>	20 µg / 100 µg
<b>Content :</b>	200 µg/ml of Ab Purified from Bioreactor Concentrate by Protein A/G. Prepared in 10mM PBS with 0.05% BSA & 0.05% azide. Also available WITHOUT BSA & azide at 1.0mg/ml.
<b>Storage condition :</b>	Antibody with azide - store at 2 to 8°C. Antibody without azide - store at -20 to -80°C. Antibody is stable for 24 months. Non-hazardous.

### Application Note

ELISA (For coating, order antibody without BSA); Western Blot (1-2ug/ml)Flow Cytometry (1-2ug/million cells); Immunofluorescence (1-2ug/ml); Immunohistochemistry (Formalin-fixed) (1-2ug/ml for 30 minutes at RT)(Staining of formalin-fixed tissues requires heating tissue sections in 10mM Tris with 1mM EDTA, pH 9.0, for 45 min at 95&degC followed by cooling at RT for 20 minutes);

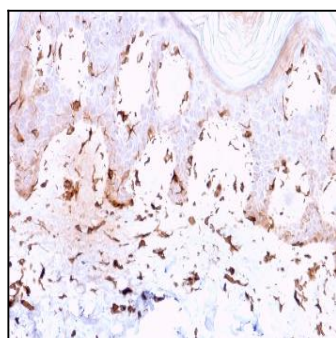


Fig. 1: Formalin-fixed, paraffin-embedded human Skin stained with Collagen VII Mouse Monoclonal Antibody (LH7.2).

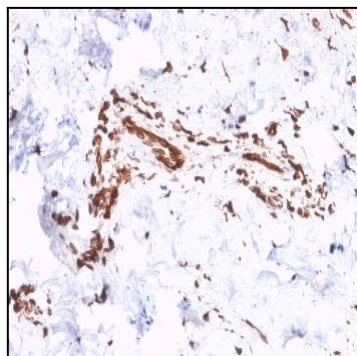


Fig. 2: Formalin-fixed, paraffin-embedded human Skin stained with Collagen VII Mouse Monoclonal Antibody (LH7.2).

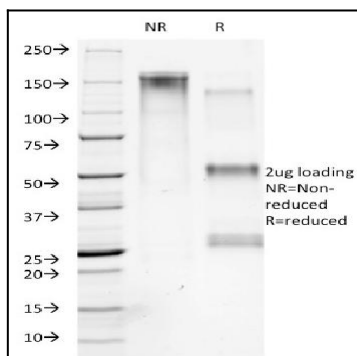


Fig. 3: SDS-PAGE Analysis Purified Collagen VII Mouse Monoclonal Antibody (LH7.2). Confirmation of Purity and Integrity of Antibody.

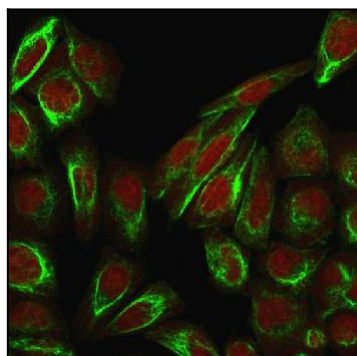


Fig. 4: Immunofluorescence Analysis of PFA-fixed HeLa cells labeling Collagen VII using Collagen VII Mouse Monoclonal Antibody (LH7.2) followed by Goat anti-Mouse IgG-CF488 (Green). The nuclear counterstain is Redot.

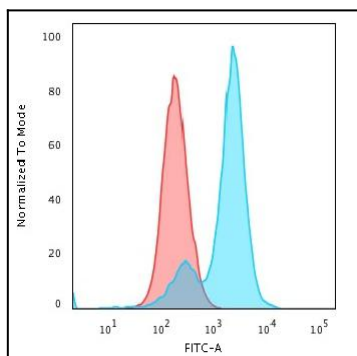


Fig. 5: Flow Cytometric Analysis of PFA-fixed HeLa cells using Collagen VII Mouse Monoclonal Antibody (LH7.2) followed by Goat anti-Mouse IgG-CF488 (Blue); Isotype Control (Red)