

## 36-2095: Anti-Clathrin, Heavy Chain Monoclonal Antibody (Clone: CHC/1432)

<b>Clonality :</b>	Monoclonal
<b>Clone Name :</b>	CHC/1432
<b>Application :</b>	IF
<b>Reactivity :</b>	Mouse, Rat, Human
<b>Gene :</b>	CLTC
<b>Gene ID :</b>	1213
<b>Uniprot ID :</b>	P53675; Q00610
<b>Alternative Name :</b>	Clathrin heavy chain; Clathrin heavy chain 1; Clathrin heavy chain 2; Clathrin heavy chain on chromosome 17 (CHC17 or CHC-17); CLH22; CLTC; CLTCL; CLTCL1; CLTCL2; CLTD
<b>Isotype :</b>	Mouse IgG1, kappa
<b>Immunogen Information :</b>	Recombinant full-length human Clathrin Heavy Chain protein

### Description

Recognizes protein of 192kDa, which is identified as Clathrin Heavy Chain. Clathrin is composed of three heavy chains and three light chains, which associate non-covalently to form a triskelion structure. Clathrin heavy chain (HC) is composed of a terminal globular domain, a distal segment and a proximal segment containing a light chain-binding site. The proximal segment of the Clathrin HC protein is essential for interactions between Clathrin heavy chains and light chains, which result in the formation of the triskelion structure.

### Product Info

<b>Amount :</b>	20 µg / 100 µg
<b>Content :</b>	200µg/ml of Ab Purified from Bioreactor Concentrate by Protein A/G. Prepared in 10mM PBS with 0.05% BSA & 0.05% azide. Also available WITHOUT BSA & azide at 1.0mg/ml.
<b>Storage condition :</b>	Antibody with azide - store at 2 to 8°C. Antibody without azide - store at -20 to -80°C. Antibody is stable for 24 months.

### Application Note

Immunofluorescence (1-2ug/ml);

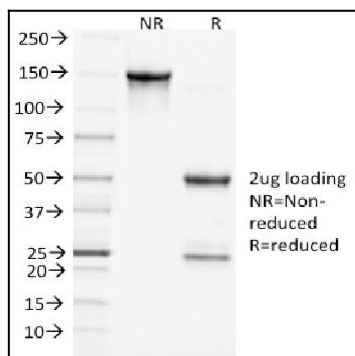


Fig.1: SDS-PAGE Analysis Purified Clathrin, HC Monoclonal Antibody (CHC/1432). Confirmation of Purity and Integrity of Antibody.

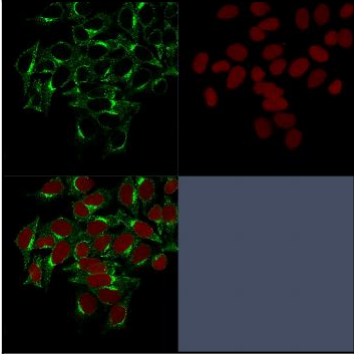


Fig. 2: Confocal Immunofluorescence image of HeLa cells stained with Clathrin, HC Monoclonal Antibody (CHC/1432) followed by Goat anti-Mouse CF488 (green). Reddot is used to label the nuclei red.