

36-2094: Anti-Clathrin, Heavy Chain Monoclonal Antibody (Clone: CLTC/1431)

| | |
|--------------------------------|---|
| Clonality : | Monoclonal |
| Clone Name : | CLTC/1431 |
| Application : | ELISA |
| Reactivity : | Human |
| Gene : | CLTC |
| Gene ID : | 1213 |
| Uniprot ID : | P53675; Q00610 |
| Alternative Name : | Clathrin heavy chain; Clathrin heavy chain 1; Clathrin heavy chain 2; Clathrin heavy chain on chromosome 17 (CHC17 or CHC-17); CLH22; CLTC; CLTCL; CLTCL1; CLTCL2; CLTD |
| Isotype : | Mouse IgG1, kappa |
| Immunogen Information : | Purified recombinant N-terminal fragment of human Clathrin Heavy Chain |

Description

Recognizes protein of 192kDa, which is identified as Clathrin Heavy Chain. Clathrin is composed of three heavy chains and three light chains, which associate non-covalently to form a triskelion structure. Clathrin heavy chain (HC) is composed of a terminal globular domain, a distal segment and a proximal segment containing a light chain-binding site. The proximal segment of the Clathrin HC protein is essential for interactions between Clathrin heavy chains and light chains, which result in the formation of the triskelion structure.

Product Info

| | |
|----------------------------|--|
| Amount : | 20 µg / 100 µg |
| Content : | 200µg/ml of Ab Purified from Bioreactor Concentrate by Protein A/G. Prepared in 10mM PBS with 0.05% BSA & 0.05% azide. Also available WITHOUT BSA & azide at 1.0mg/ml. |
| Storage condition : | Antibody with azide - store at 2 to 8°C. Antibody without azide - store at -20 to -80°C. Antibody is stable for 24 months. |

Application Note

ELISA (For coating, order Ab without BSA);

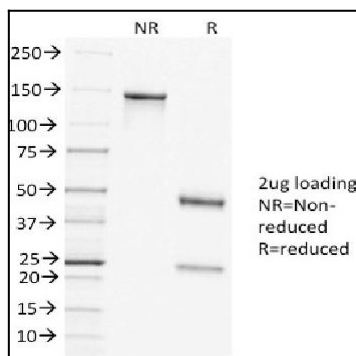


Fig.1: SDS-PAGE Analysis of Purified Clathrin HC Mouse Monoclonal Antibody (CLTC/1431). Confirmation of Purity and Integrity of Antibody.