

## 36-2092: Anti-Clathrin, Light Chain Monoclonal Antibody (Clone: CLC/1421)

<b>Clonality :</b>	Monoclonal
<b>Clone Name :</b>	CLC/1421
<b>Application :</b>	IHC
<b>Reactivity :</b>	Human
<b>Gene :</b>	CLTA and CLTB
<b>Gene ID :</b>	1211; 1212
<b>Uniprot ID :</b>	P09496; P09497
<b>Alternative Name :</b>	Clathrin light chain A; Clathrin light chain B; Clathrin light chain LCA; Clathrin light chain LCB; Clathrin light polypeptide A; Clathrin light polypeptide B; Clathrin, light polypeptide (Lca); Clathrin, light polypeptide (Lcb); CLTA; CLTB
<b>Isotype :</b>	Mouse IgG2b, kappa
<b>Immunogen Information :</b>	Purified recombinant N-terminal fragment of human Clathrin Light Chain

### Description

Recognizes proteins of 31-44kDa, which are identified as Clathrin Light Chains (both A B). Clathrin is composed of three heavy chains and three light chains, which associate non-covalently to form a triskelion structure. Clathrin light chain regulates the self-assembly of triskelions onto intracellular membranes. Clathrin light chain subunits (LCA and LCB) contribute to regulation of coated vesicle formation to sort proteins during receptor-mediated endocytosis and organelle biogenesis. LCA and LCB are encoded by two discrete genes. They share only 60% homology, and have certain features in common. Both LCA and LCB undergo alternative mRNA splicing, which results in the generation of tissue-specific isoforms.

### Product Info

<b>Amount :</b>	20 µg / 100 µg
<b>Content :</b>	200µg/ml of Ab Purified from Bioreactor Concentrate by Protein A/G. Prepared in 10mM PBS with 0.05% BSA & 0.05% azide. Also available WITHOUT BSA & azide at 1.0mg/ml.
<b>Storage condition :</b>	Antibody with azide - store at 2 to 8°C. Antibody without azide - store at -20 to -80°C. Antibody is stable for 24 months.

### Application Note

Immunohistochemistry (Formalin-fixed) (1-2ug/ml for 30 min at RT)(Staining of formalin-fixed tissues requires heating tissue sections in 10mM Tris with 1mM EDTA, pH 9.0, for 45 min at 95&degC followed by cooling at RT for 20 minutes);

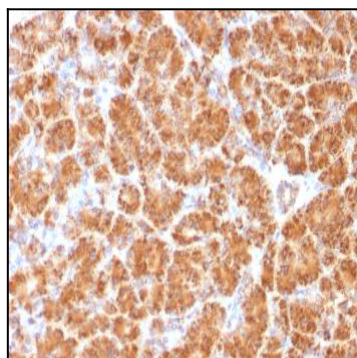


Fig.1: Formalin-fixed, paraffin-embedded human Pancreas stained with Clathrin, LC Monoclonal Antibody (CLC/1421).

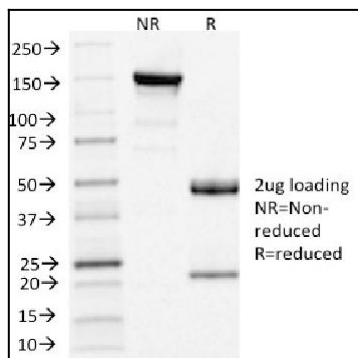


Fig. 2: SDS-PAGE Analysis of Purified Clathrin, LC Mouse Monoclonal Antibody (CLC/1421). Confirmation of Purity and Integrity of Antibody