

36-2062: Anti-MALT1 (MALT-Lymphoma Marker) Monoclonal Antibody (Clone: rMT1/410)

Clonality :	Monoclonal
Clone Name :	rMT1/410
Application :	IHC
Reactivity :	Human
Gene :	MALT1
Gene ID :	10892
Uniprot ID :	Q9UDY8
Alternative Name :	Caspase-like protein, MALT lymphoma-associated translocation, MLT1, Mucosa-associated lymphoid tissue lymphoma translocation protein 1, Paracaspase
Isotype :	Mouse IgG1, kappa
Immunogen Information :	Recombinant fragment (around aa701-808) of human MALT1 protein (exact sequence is proprietary)

Description

Mucosa associated lymphoid tissue lymphoma translocation gene 1 (MALT1) is found in extranodal low-grade B cell lymphomas. MALT1 encodes two Ig-like C2-type domains and fuses with an API2 gene, which is highly expressed in adult lymphoid tissue. The translocation of this MALT1 gene, which maps to human chromosome 18q21, and the apoptosis-inhibiting API2 gene results in an increased development of MALT lymphomas and apoptosis inhibition. Sites at which this API2-MALT1 (11;18)(q21;q21) translocation commonly occurs are within human lung and kidney tissue. MALT lymphoma expresses nuclear Bcl10, which mediates the oligomerization and activation of a MALT1 caspase-like domain. MALT1 mRNA is found in pre-B cells, mature B cells and plasma cells.

Product Info

Amount :	20 µg / 100 µg
Content :	200µg/ml of Ab Purified from Bioreactor Concentrate by Protein A/G. Prepared in 10mM PBS with 0.05% BSA & 0.05% azide. Also available WITHOUT BSA & azide at 1.0mg/ml.
Storage condition :	Antibody with azide - store at 2 to 8°C. Antibody without azide - store at -20 to -80°C. Antibody is stable for 24 months.

Application Note

Immunohistochemistry (Formalin-fixed) (1-2ug/ml for 30 minutes at RT),(Staining of formalin-fixed tissues requires heating tissue sections in 10mM Tris with 1mM EDTA, pH 9.0, for 45 min at 95°C followed by cooling at RT for 20 minutes);

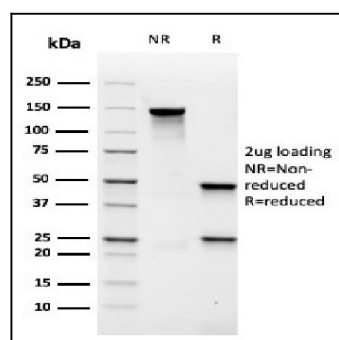


Fig.1: SDS-PAGE Analysis Purified MALT1 Recombinant Mouse Monoclonal Antibody (rMT1/410). Confirmation of Purity and Integrity of Antibody.

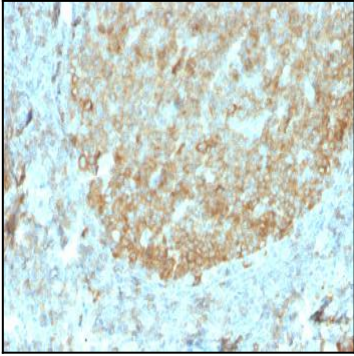


Fig. 2: Formalin-fixed, paraffin-embedded human Tonsil stained with MALT1 Recombinant Mouse Monoclonal Antibody (rMT1/410).