

36-2044: Anti-Podoplanin (PDPN) (Lymphatic Endothelial & Mesothelial Marker) Monoclonal Antibody (Clone: PDPN/1433)

Clonality :	Monoclonal
Clone Name :	PDPN/1433
Application :	ELISA,IHC,IF
Reactivity :	Human
Gene :	PDPN
Gene ID :	10630
Uniprot ID :	Q86YL7
Alternative Name :	Aggrus; Glycoprotein 36 KD; Glycoprotein 36; gp36; GP38; GP40; HT1A1; hT1alpha1; hT1alpha2; Lung type I cell membrane associated glycoprotein; Lung type I cell membrane associated glycoprotein T1A 2; OTS8; PA2.26; Pdpn; Podoplanin; PSEC0003; PSEC0025; T1-alpha; T1A; T11A; T1A2
Isotype :	Mouse IgG1, kappa
Immunogen Information :	Recombinant human Podoplanin (PDPN) protein fragment (around aa 24-126) (exact sequence is proprietary)

Description

It recognizes a muco-protein of 38-43kDa, which is identified as Podoplanin (PDPN). It localizes in stromal cells of peripheral lymphoid tissue and thymic epithelial cells. As a regulator of the lymphatic endothelium, podoplanin probably plays a role in maintaining the unique shape of podocytes. It is selectively expressed in lymphatic endotheliumas well as lymphoangiomas,Kaposi sarcomas,and in a subset of angiosarcomas with probable lymphatic differentiation. Recent studies have also shown podoplanin to be a highly sensitive and relatively specific marker for epithelioid mesothelioma. Therefore, it can be used in a panel to distinguish mesotheliomas or mesothelial cells from pulmonary carcinomas.

Product Info

Amount :	20 µg / 100 µg
Content :	200µg/ml of Ab Purified from Bioreactor Concentrate by Protein A/G. Prepared in 10mM PBS with 0.05% BSA & 0.05% azide. Also available WITHOUT BSA & azide at 1.0mg/ml.
Storage condition :	Antibody with azide - store at 2 to 8°C. Antibody without azide - store at -20 to -80°C. Antibody is stable for 24 months.

Application Note

ELISA (For coating, order antibody without BSA); Immunofluorescence (1-2ug/ml); ,Immunohistochemistry (Formalin-fixed) (1-2ug/ml for 30 minutes at RT),(Staining of formalin-fixed tissues requires heating tissue sections in 10mM Tris with 1mM EDTA, pH 9.0, for 45 min at 95°C followed by cooling at RT for 20 minutes);

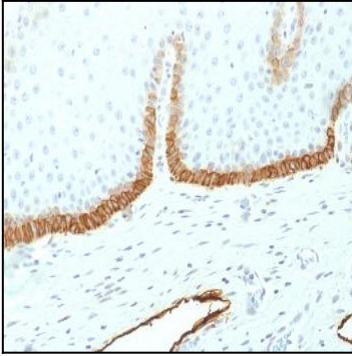


Fig.1: Formalin-fixed, paraffin-embedded human Cervix stained with Podoplanin-Monospecific Mouse Monoclonal Antibody (PDPN/1433)

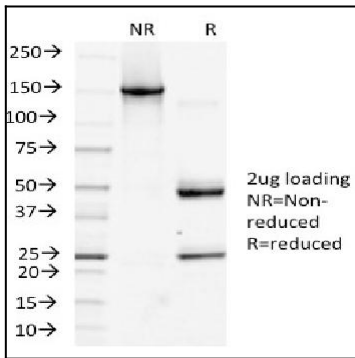


Fig. 2: SDS-PAGE Analysis Purified Podoplanin-Monospecific Mouse Monoclonal Antibody (PDPN/1433). Confirmation of Integrity and Purity of Antibody.

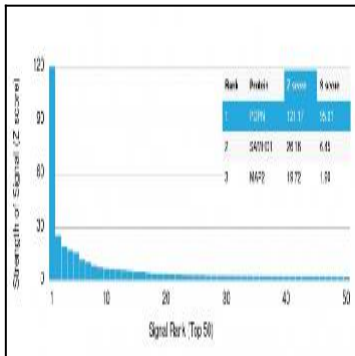


Fig. 3: Analysis of Protein Array containing more than 19,000 full-length human proteins using Podoplanin-Monospecific Mouse Monoclonal Antibody (PDPN/1433) Z- and S- Score: The Z-score represents the strength of a signal that a monoclonal antibody (Monoclonal Antibody) (in combination with a fluorescently-tagged anti-IgG secondary antibody) produces when binding to a particular protein on the HuProt™ array. Z-scores are described in units of standard deviations (SD's) above the mean value of all signals generated on that array. If targets on HuProt™ are arranged in descending order of the Z-score, the S-score is the difference (also in units of SD's) between the Z-score. S-score therefore represents the relative target specificity of a Monoclonal Antibody to its intended target. A Monoclonal Antibody is considered to specific to its intended target, if the Monoclonal Antibody has an S-score of at least 2.5. For example, if a Monoclonal Antibody binds to protein X with a Z-score of 43 and to protein Y with a Z-score of 14, then the S-score for the binding of that Monoclonal Antibody to protein X is equal to 29.