

36-2016: Anti-Cadherin 17 / LI Cadherin (Liver-Intestine Marker) Monoclonal Antibody (Clone: CDH17/2617)

Clonality :	Monoclonal
Clone Name :	CDH17/2617
Application :	WB,IHC
Reactivity :	Human
Gene :	CDH17
Gene ID :	1015
Uniprot ID :	Q12864
Alternative Name :	BILL-cadherin; Cadherin-17; CDH17; HPT-1 cadherin; human intestinal peptide-associated transporter HPT-1; human peptide transporter 1 (HPT-1); Intestinal peptide-associated transporter HPT-1; LI-cadherin (liver-intestine); Liver Cadherin; Liver-intestine cadherin
Isotype :	Mouse IgG2b, kappa
Immunogen Information :	Recombinant fragment (around aa 242-418) of human Cadherin 17 protein (CDH17) (exact sequence is proprietary)

Description

It recognizes a protein of 120kDa, which is identified as Cadherin 17 (also known as LI Cadherin). The cadherins are a family of Calcium-dependent adhesion molecules that function to mediate cell-cell binding critical to the maintenance of tissue structure and morphogenesis. Cadherins each contain a large extracellular domain at the amino terminus, which is characterized by a series of five homologous repeats, the most distal of which is thought to be responsible for binding specificity. The relatively short carboxy terminal, intracellular domain interacts with a variety of cytoplasmic proteins, including beta-catenin, to regulate cadherin function. LI-cadherin (for liver-intestine-cadherin) expression is restricted to liver and intestine tissues and is specifically localized to the basolateral domain of hepatocytes and enterocytes.

Product Info

Amount :	20 µg / 100 µg
Content :	200µg/ml of Ab Purified from rabbit anti-serum by Protein A. Prepared in 10mM PBS with 0.05% BSA & 0.05% azide. Also available WITHOUT BSA at 1.0mg/ml.
Storage condition :	Antibody with azide - store at 2 to 8°C. Antibody without azide - store at -20 to -80°C. Antibody is stable for 24 months.

Application Note

Western Blot (1-2ug/ml);,Immunohistochemistry (Formalin-fixed) (1-2ug/ml for 30 min at RT),(Staining of formalin-fixed tissues requires heating tissue sections in 10mM Tris with 1mM EDTA, pH 9.0, for 45 min at 95°C followed by cooling at RT for 20 minutes);

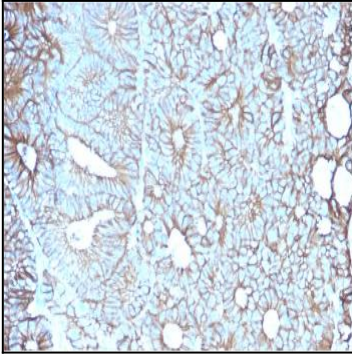


Fig.1: Formalin-fixed, paraffin-embedded human Colon stained with Cadherin 17 / CDH17 Mouse Monoclonal Antibody (CDH17/2617).

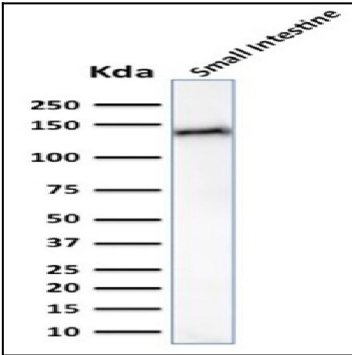


Fig. 2: Western Blot Analysis of human Small Intestine tissue lysate using Cadherin 17 / CDH17 Mouse Monoclonal Antibody (CDH17/2617).

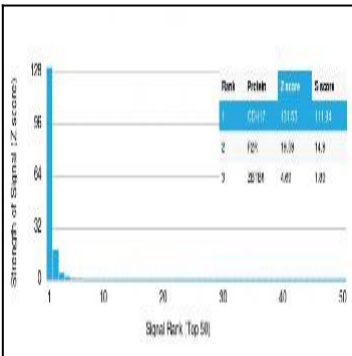


Fig. 3: Analysis of Protein Array containing more than 19,000 full-length human proteins using Cadherin 17 (CDH17) Mouse Monoclonal Antibody (CDH17/2617). Z- and S- Score: The Z-score represents the strength of a signal that a monoclonal antibody (Monoclonal Antibody) (in combination with a fluorescently-tagged anti-IgG secondary antibody) produces when binding to a particular protein on the HuProt™ array. Z-scores are described in units of standard deviations (SD's) above the mean value of all signals generated on that array. If targets on HuProt™ are arranged in descending order of the Z-score, the S-score is the difference (also in units of SD's) between the Z-score. S-score therefore represents the relative target specificity of a Monoclonal Antibody to its intended target. A Monoclonal Antibody is considered to specific to its intended target, if the Monoclonal Antibody has an S-score of at least 2.5. For example, if a Monoclonal Antibody binds to protein X with a Z-score of 43 and to protein Y with a Z-score of 14, then the S-score for the binding of that Monoclonal Antibody to protein X is equal to 29.